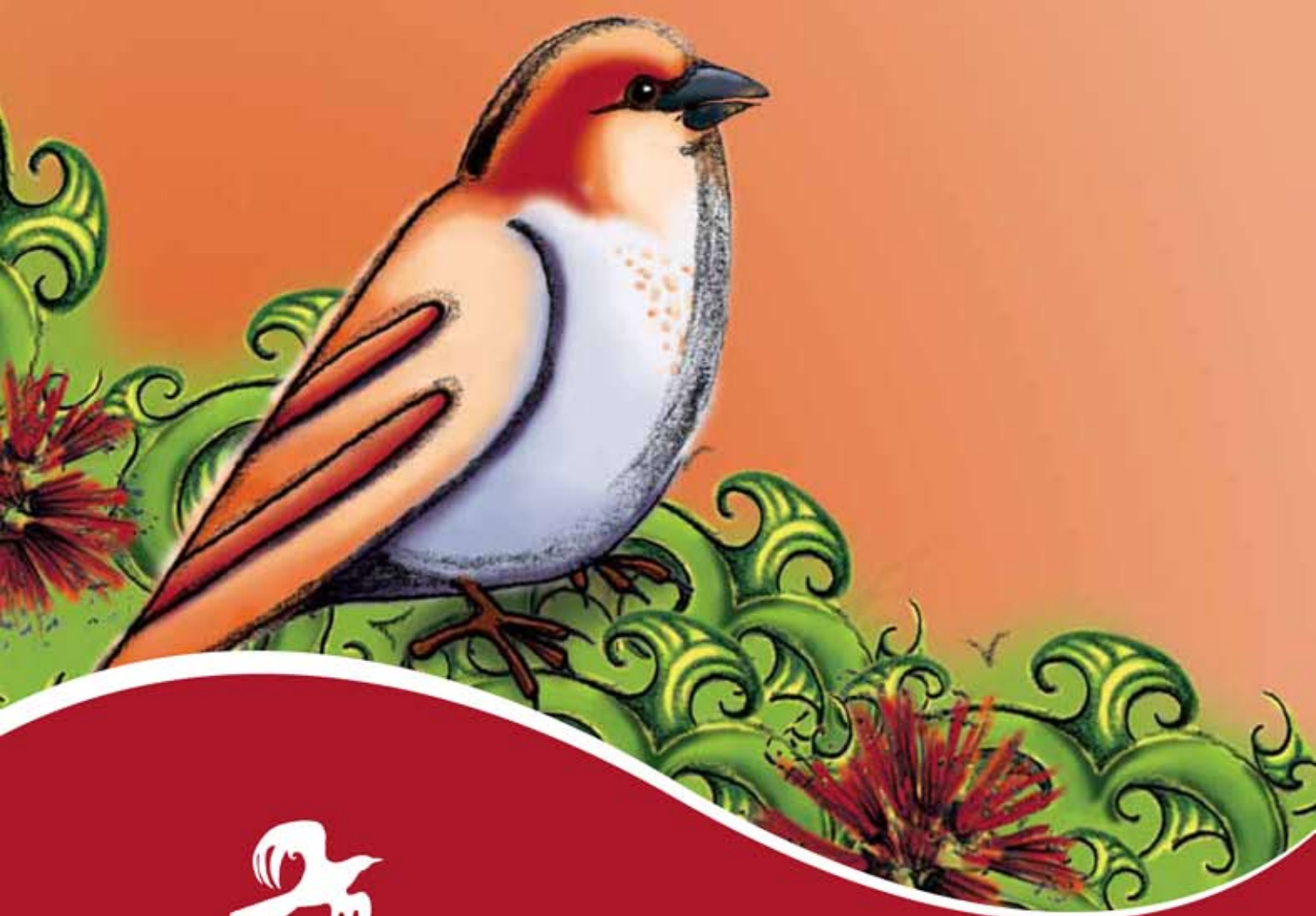


He Kura Tuhituhi

He Tuhinga Whakaahua



He Manu Tuhituhi

He Pukapuka Arataki i te Kaituhi

Ngā Ihirangi

Hei Whakamārama	4
Te Pūtake o te Tuhinga Whakaahua	5
Ngā Momo Tuhinga Whakaahua	6
Te Whakaahua Whaiaro	7
He Whakaahua Whaiaro hei Taura	8
Ngā Āhuratanga Reo o te Whakaahua Whaiaro	9
Ngā Wāhanga o te Whakaahua Whaiaro	12
He Ara Tuhituhi i te Whakaahua Whaiaro	15
He Taura Anō	26
Te Whakaahua Whānui	33
He Whakaahua Whānui hei Taura	34
Ngā Āhuratanga Reo o te Whakaahua Whānui	35
Ngā Wāhanga o te Whakaahua Whānui	38
He Ara Tuhituhi i te Whakaahua Whānui	41
He Taura Anō	52
He Mahere Ārahi i te Tuhituhi	59
Ngā Taura Tuhinga	62
Te Kuputaka	70
Ngā Tohutoro	71
Te Matapaki	72
Te Tukanga Tuhituhi	74

Hei Whakamārama

He pukapuka tēnei mā te kaiako, mā te ākongā hoki, he pukapuka āwhina i ngā akoranga tuhituhi whakaahua.

Ki te kaiako,

Ko te tikanga māu tēnei pukapuka e whakamahi. Māu te wāhanga o te pukapuka me te tauira tuhinga e whiriwhiri e hāngai ana ki te momo akoranga, ngā mōhiotanga me ngā pūkenga o ngā ākongā.

Te pūtaka o tēnei pukapuka

Ko te pūtaka o te pukapuka nei he whakaatu i:

- Te pūtaka o te tuhinga whakaahua
- Ngā āhuatanga reo o te tuhinga whakaahua
- Tētahi ara tuhituhi
- Ngā momo tuhinga whakaahua
- Ngā wāhanga o te tuhinga whakaahua

He tuhinga hei tauira¹

Kua whakaaturia tētahi tauira tuhinga mō ia momo tuhinga whakaahua. Kua whakaaturia ōna āhuatanga reo me ōna wāhanga. Kua whāia hoki e te kaituhi tētahi ara tuhituhi hei tuhi i tāna tauira tuhinga. Ko te pūtaka o te ara tuhituhi he āwhina i ngā ākongā ki te tīmata ki te takahi i te ara tuhituhi whakaahua. Ko te whāinga kia whārikihia te tūāpapa mō ngā āhuatanga reo me ngā wāhanga o te tuhinga whakaahua.



Te matapaki

Ka kite koe i te weka i ētahi whārangi o te ara tuhituhi. Ko te putanga o te weka he tohu whakamaumahara mā te matapaki ka oti pai ai tēnei wāhanga o te tuhinga. Mā te whakawhitiwhiti kōrero, mā te āta pātaitai a te kaiako e āwhinatia ai te ākongā kia whanake ōna pūkenga tuhituhi. Kei muri i tēnei pukapuka he whārangi e whakaatu ana i ngā huarahi matapaki, ngā momo matapaki me ētahi pātai hei āwhina i te kaituhi.

Te tukanga tuhituhi

Kua whakaaturia tētahi tukanga tuhituhi ki muri i tēnei pukapuka. Ko te tikanga kia toro haere te kaituhi ki ngā wāhanga o te tukanga nei kia pai ai te takoto o tāna tuhinga.

He tauira anō

Ko ngā tauira anō hei whakaatu i te whanaketanga o ngā āhuatanga reo, ngā tikanga tuhituhi me ngā kupu mō te tuhinga whakaahua. Whiriwhiria te tauira e hāngai ana ki ngā pūkenga me ngā mōhiotanga o ngā ākongā hei whakaakoranga.

Me pēhea te whakamahi i tēnei pukapuka?

Ko te mea nui, i te tīmatanga māu ēnei momo tuhinga e whakaatu, e whakaako hoki mā te **huarahi whakaako tuhituhi ngātahi**. Whai muri, ka mahia mā te **huarahi whakaako tuhituhi me te arahanga**, tae noa ki te wā ka taea e te ākongā te mahi mā te **huarahi whakaako tuhituhi takitahi**.²

Ko te mahere e whai nei hei āwhina i a koe ki te tāutu i te huarahi whakaako tuhituhi e tika ana mō ngā ākongā:

Ngā Reanga³ o He Ara Rēre me ngā Huarahi Whakaako

	Te Huarahi Whakaako Tuhituhi Ngātahi	Te Huarahi Whakaako Tuhituhi me te Arahanga	Te Huarahi Whakaako Tuhituhi Takitahi
Ka Oho	Te whakaahua whaiaro		
Ka Whai Huru	Te whakaahua whaiaro		
Ka Marewa	Te whakaahua whānui	Te whakaahua whaiaro	
Ka Rere		Te whakaahua whānui	Te whakaahua whaiaro Te whakaahua whānui

¹ Kei muri i tēnei pukapuka he kape o ngā tauira tuhinga katoa. Ka taea ēnei whārangi te tārua.

² Tirohia te pukapuka aratohu mā te kaiako *Ka Rere te Manu ki te Ao Tuhituhi*, Te Wāhanga Tuatoru, mō te whakamāramatanga o ēnei huarahi e toru mō te whakaako tuhituhi.

³ Tirohia te pukapuka aratohu mā te kaiako *Ka Rere te Manu ki te Ao Tuhituhi*, Te Wāhanga Tuārua, mō ngā āhuatanga o ngā ākongā kei ngā reanga 'Ka Oho', 'Ka Whai Huru', 'Ka Marewa', 'Ka Rere'.

Te Pūtake o te Tuhinga Whakaahua

Ko te pūtake o te tuhinga whakaahua he whakaahua i te āhua, i ngā mahi me ngā āhuetanga o tētahi tangata, o tētahi kararehe, o tētahi atu mea rānei.



Ngā Momo Tuhinga Whakaahua



Ka tirohia ēnei momo tuhinga whakaahua e rua:

1. Te whakaahua whaiaro
2. Te whakaahua whānui

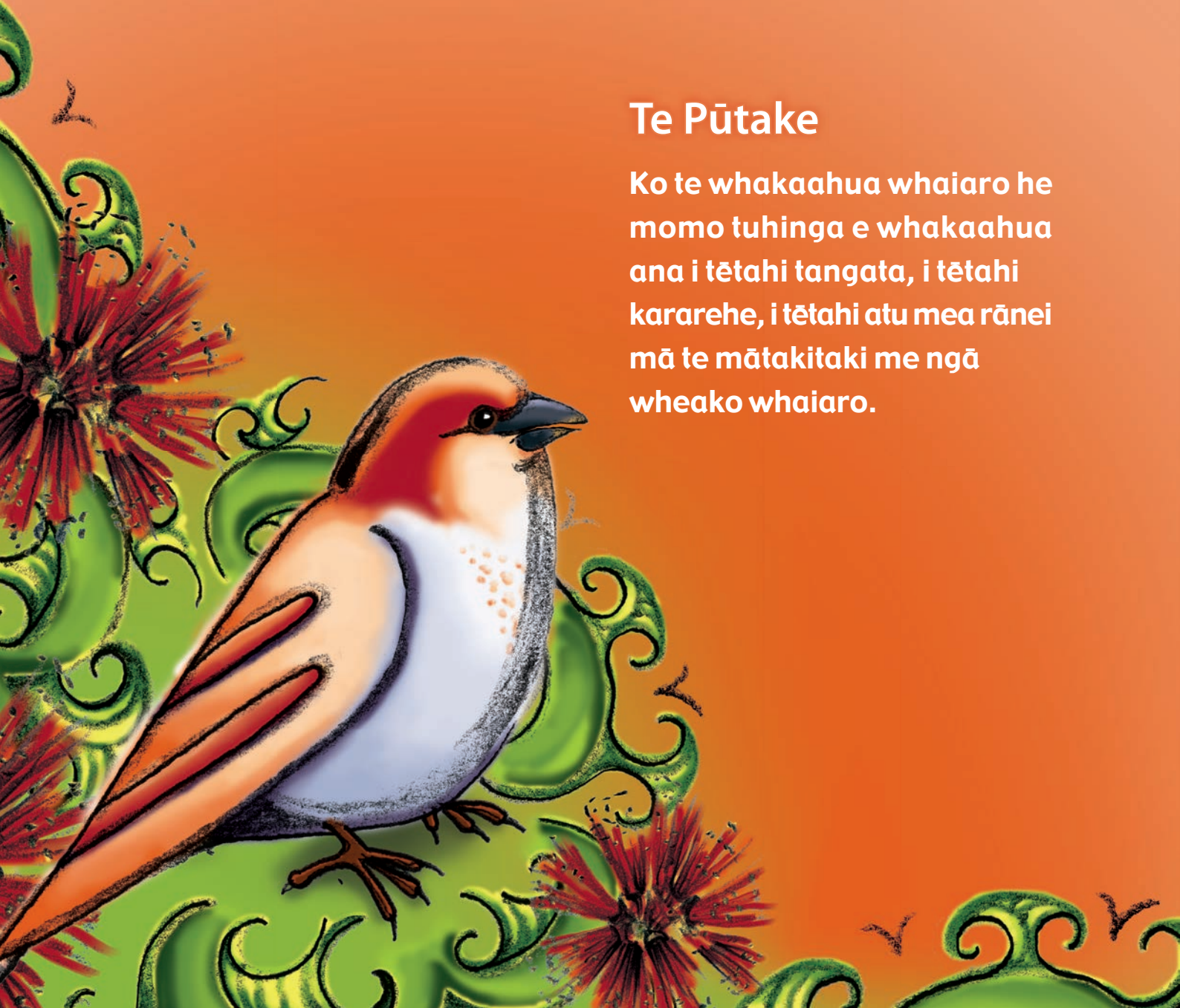
Hei whakataurite i te whakaahua whaiaro me te whakaahua whānui

	Te Whakamāramatanga	Te Hā o te Whakaahua
Te Whakaahua Whaiaro	He momo tuhinga e whakaahua ana i tētahi tangata, i tētahi kararehe, i tētahi atu mea rānei mā te mātakitaki me ngā wheako whaiaro.	Mā te tuhituhi i ngā mea pūmau me ngā whakaaro whaiaro ka whakaahua te kaituhi i te kaupapa. Ka puta mai ōna kare-ā-roto.
Te Whakaahua Whānui	He momo tuhinga e whakaahua ana i tētahi kaupapa whānui me ōna tū āhuratanga mā te rangahau.	He ōkawa te reo. Mā te tuhituhi i ngā mea pūmau anake ka whakaahua te kaituhi i te kaupapa.

Te Whakaahua Whaiaro

Te Pūtake

Ko te whakaahua whaiaro he momo tuhinga e whakaahua ana i tētahi tangata, i tētahi kararehe, i tētahi atu mea rānei mā te mātakitaki me ngā wheako whaiaro.



He Whakaahua Whaiaro hei Taurira



*Ka whakaatu au i te whakaahua whaiaro
kua tuhia e Mariana mō tōna pahikara hou.*

Ka whakaaturia:

- Ngā āhuatanga reo
- Ngā wāhanga
- Te ara tuhituhi i whāia e Mariana

Tirohia tāna tuhinga:

Tōku Pahikara Hou

He pahikara hou tōku. I homai e ōku mātua hei koha mō taku huritau. Ko te pahikara nei te tino whiwhinga mōku, i te mea mai rā anō taku hiahia ki te whiwhi pahikara.

He rawe te āhua o tōku pahikara hou. He whero me te mā ngā tae. E rua ngā wīra pango, e rua hoki ngā puringa maitai. E rua ngā pētara kirihou, kotahi te tūru hei nohoanga mōku. Ka pīataata i te rā me te mīharo hoki. E ai ki aku hoa ko tōku pahikara te tino pahikara.

Kei te ako tonu au ki te eke pahikara. Me tautoko mai tētahi i ahau ki te eke i tōku pahikara, i te mea he āhua teitei mōku. Mā tētahi ahau e pupuri i te tuatahi, i te mea me kaha aro ahau ki te pupuri ki ngā puringa, me te whakahuri i ngā pētara i te wā kotahi. Otirā, e mōhio ana ahau e kore e roa ka tere taku haere pēnei me te hau.

Ki ahau nei, he tino pai ngā pahikara, i te mea ka whakahākoakoa i ngā tamariki, ā, ka hari i a koe ki wī, ki wā.



Ngā Āhuatanga Reo o te Whakaahua Whaiaro



Ka tirohia ētahi o ngā āhuatanga reo o te whakaahua whaiaro:

- Te reo tautahi
- Te kupu ingoa
- Te kupu āhua
- Te kupumahi

Tirohia ngā whārangi e whai ake nei.

Te Whakamāramatanga o ngā Āhuatanga Reo

Te reo tautahi

Ka tuhia te whakaahua whaiaro i te reo tautahi, i te mea ka whakaahua te kaituhi i tētahi tangata, kararehe, mea rānei e mōhiotia ana e ia.

Te tūpou tautahi

Ko ēnei ngā tūpou tautahi: **au/ahau, māua, mātou, tāua, tātou.**

Hei tauira:

Me tautoko mai tētahi i **ahau** ki te eke i tōku pahikara.

Te pūriro tautahi

Ko ēnei ētahi o ngā pūriro tautahi: **taku/tāku/tōku, aku/āku/ōku, tā/tō tāua, ā/ō mātou.**

Hei tauira:

He pahikara hou **tōku**. I homai e **ōku** mātua hei koha mō **taku** huritau.

Te kupu ingoa

Ko tā te kupu ingoa **he tapa i tētahi mea**. I roto i te whakaahua whaiaro ka tapaina ngā wāhanga o te kaupapa me ētahi atu o ōna āhuatanga.

Hei tauira:

He **pahikara** hou tōku

kotahi te **tūru**

E rua ngā **wīra**

e rua ngā **puringa**

E rua ngā **pētara**

He whero me te mā ngā **tae**

Te kupu āhua

Ko tā te kupu āhua he tohu i **te āhua o tētahi mea**. I roto i te whakaahua ka whakaahuatia te āhua o tētahi mea me ōna wāhanga.

Hei tauira:

He **whero** me te **mā** ngā tae

He ahua **teitei** mōku.

Te kupumahi

Ko tā te kupumahi **he tohu i tētahi mahi**. I roto i te whakaahua ka tohu ngā kupumahi i ngā mahi e pā ana ki te kaupapa.

Hei tauira:

Mā tētahi ahau e **pupuri** i te tuatahi, i te mea me kaha **aro** ahau ki te **pupuri** ki ngā puringa, me te **whakahuri** i ngā pētara i te wā kotahi.



*Tirohia ngā āhuetanga reo
kua whakamahia e Mariana
i tāna whakaahua whaiaro.*

Te reo tautahi

ahau

tōku

ōku

mōku

aku



Te kupu ingoa

pahikara

tae

wīra

puringa

tūru

pētara



Te kupu āhua

whero

mā

pango

maitai

kirihou

teitei



Te kupumahi

haere

eke

aro

pupuri

whakahuri

Tōku Pahikara Hou

He pahikara hou tōku. I homai e ōku mātua hei koha mō taku huritau. Ko te pahikara nei te tino whiwhinga mōku, i te mea mai rā anō taku hiahia ki te whiwhi pahikara.

He rawe te āhua o tōku pahikara hou. He whero me te mā ngā tae. E rua ngā wīra pango, e rua hoki ngā puringa maitai. E rua ngā pētara kirihou, kotahi te tūru hei nohoanga mōku. Ka pīataata i te rā me te mīharo hoki. E ai ki aku hoa ko tōku pahikara te tino pahikara.

Kei te ako tonu au ki te eke pahikara. Me tautoko mai tētahi i ahau ki te eke i tōku pahikara, i te mea he āhua teitei mōku. Mā tētahi ahau e pupuri i te tuatahi, i te mea me kaha aro ahau ki te pupuri ki ngā puringa, me te whakahuri i ngā pētara i te wā kotahi. Otirā, e mōhio ana ahau e kore e roa ka tere taku haere pēnei me te hau.

Ki ahau nei, he tino pai ngā pahikara, i te mea ka whakahākoako i ngā tamariki, ā, ka hari i a koe ki wī, ki wā.

Ngā Wāhanga o te Whakaahua Whaiaro



E whā ngā wāhanga o te whakaahua whaiaro:

1. Te tapanga
2. Te whakamāramatanga
3. Te whakaahuatanga
4. Te whakakapinga

Tirohia ngā whārangi e whai ake nei.

Te Whakamāramatanga o ngā Wāhanga

Te tapanga

Hei tāutu i te kaupapa o te whakaahua.

Te whakamāramatanga

Hei whakamōhio atu ki te kaipanui i te kaupapa o te tuhinga me te take he kaupapa nui tēnei ki a koe.

Te whakaahuatanga

Hei whakamōhio atu ki te kaipanui i te āhua me ngā mahi o te kaupapa kua whiriwhiria.

Te whakakapinga

Hei whakarāpopoto, hei whakakapi i ōu whakaaro mō te kaupapa.





Tirohia ngā wāhanga e whā o te whakaahua whaiaro a Mariana.

Te tapanga

Tōku Pahikara Hou

Te whakamāramatanga

He pahikara hou tōku. I homai e ōku mātua hei koha mō taku huritau. Ko te pahikara nei te tino whiwhinga mōku, i te mea mai rā anō taku hiahia ki te whiwhi pahikara.

Te whakaahuatanga

He rawe te āhua o tōku pahikara hou. He whero me te mā ngā tae. E rua ngā wīra pango, e rua hoki ngā puringa maitai. E rua ngā pētara kirihou, kotahi te tūru hei nohoanga mōku. Ka pīataata i te rā me te mīharo hoki. E ai ki aku hoa ko tōku pahikara te tino pahikara.

Kei te ako tonu au ki te eke pahikara. Me tautoko mai tētahi i ahau ki te eke i tōku pahikara, i te mea he āhua teitei mōku. Mā tētahi ahau e pupuri i te tuatahi, i te mea me kaha aro ahau ki te pupuri ki ngā puringa, me te whakahuri i ngā pētara i te wā kotahi. Otirā, e mōhio ana ahau e kore e roa ka tere taku haere pēnei me te hau.

Te whakakapinga

Ki ahau nei, he tino pai ngā pahikara, i te mea ka whakahākoako i ngā tamariki, ā, ka hari i a koe ki wī, ki wā.

He Ara Tuhituhi i te Whakaahua Whaiaro

*Ko te ara tuhituhi nei hei āwhina i te kaituhi ki te whakarite
me te whakatakoto i ngā wāhanga o te tuhinga.*



E whā ngā wāhanga o tēnei ara tuhituhi:

1. Te whakarite i te horopaki o te tuhinga

Te whakarite me te tuhituhi i:

2. Te whakamāramatanga
3. Te whakaahuatanga
4. Te whakakapinga

*Kia mahara ake – kia tutuki pai ai te mahi tuhituhi,
me matapaki ia wāhanga o te ara e te kaituhi mā
tētahi huarahi matapaki.*

He Ara Tuhituhi

Te horopaki

Whakaarohia:

1. Te pūtake
2. Ngā kaipānui
3. Te momo tuhinga
4. Te tapanga

Te whakamāramatanga

- Whakaritea te whakamāramatanga
- Tuhia te whakamāramatanga

Te whakaahuatanga

- Tāngia he pikitia, tapaina ngā wāhanga ki ngā kupu ingoa
- Whakaarohia ngā kupu āhua
- Tuhia he kōwae mō te āhua
- Kohia ōu whakaaro mō ngā mahi
- Tuhia he kōwae mō ngā mahi

Te whakakapinga

- Whakaritea te whakakapinga
- Tuhia te whakakapinga

I whai a Mariana i tēnei ara hei tuhituhi i tāna whakaahua whaiaro mō tōna pahikara hou. Tirohia ngā whārangi e whai ake nei.

Te Horopaki



Ko te mahi tuatahi mā te kaituhi, ko te whakaaro ki te horopaki o tāna tuhinga.

Ka whakautu ia i ēnei pātai:

1. He aha te pūtake o te tuhinga?
2. Mā wai te tuhinga?
3. He aha te momo tuhinga?
4. He aha tētahi tapanga mō te tuhinga?

Tirohia ngā whakautu a Mariana ki ngā pātai mō te horopaki o te tuhinga. Ka whiriwhiri a Mariana i tētahi tapanga kia hāngai pū ōna whakaaro ki tāna kaupapa. Ka taea e ia te tīni mēnā he whakaaro atu anō ka puta mai.



- | | |
|----------------------------|---|
| 1. Te pūtake: | He whakaatu i te āhua o tōku pahikara hou |
| 2. Ngā kaipānui: | Ōku hoa mahi |
| 3. Te momo tuhinga: | He whakaahua whaiaro |
| 4. Te tapanga: | Tōku Pahikara Hou |

Te Whakamāramatanga

Ka huri a Mariana i nāianei ki te whakarite i te whakamāramatanga o tāna tuhinga. Ka whakautu ia i ēnei pātai e rua. Kātahi ka āta tuhituhi a Mariana i ngā whakautu hei rerenga tuhituhi.

1. He aha te mea e whakaahua ana au?

Tōku pahikara hou i homai mō tōku huritau

2. He aha te take he kaupapa nui tēnei ki ahau?



Mai i te wā he paku ahau i tino hiahia au ki te pahikara

Te kaupapa

He pahikara hou tōku. I homai e ōku mātua hei koha mō taku huritau. Ko te pahikara nei te tino whiwhinga mōku, i te mea mai rā anō taku hiahia ki te whiwhi pahikara.

Ka whakamārama a Mariana he aha ai he kaupapa nui tēnei ki a ia

Te whakamāramatanga

Te whakaahuatanga

Te whakakapinga

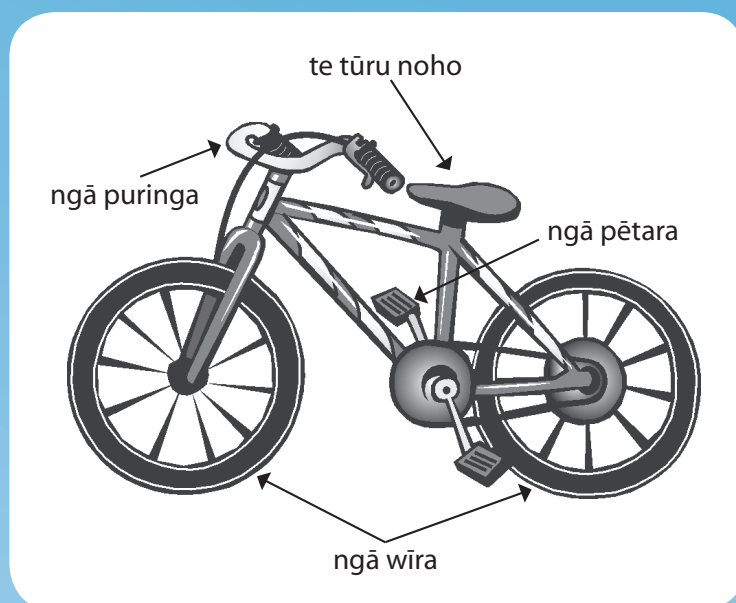
Te Whakaahuatanga



Ka huri a Mariana ki te whakarite i te whakaahuatanga. I te tuatahi, ka whakaritea he kōwae mō te āhua o tōna pahikara. I te tuarua, ka whakaritea he kōwae mō tāna mahi i runga i te pahikara.

Tāngia he pikitia, tapaina ngā wāhanga ki ngā kupu ingoa

Hei āwhina ki te whakaahua i te āhua o tōna pahikara, ka tāngia e Mariana he pikitia o te pahikara. Kātahi ka tapa ia i ngā wāhanga o te pahikara ki ngā kupu ingoa.



Whakaarohia ngā kupu āhua



Whai muri ka whakaaro a Mariana
ki ngā kupu āhua mō ngā wāhanga.



Tuhia he kōwae mō te āhua

Kua rite a Mariana ki te tuhi i ōna whakaaro mō te āhua o tōna pahikara hei kōwae. Ka āta whakaaro ia ki te rerenga tuatahi hei whakatakoto i te kaupapa o te kōwae. Ka hāngai ngā rerenga e whai ana ki tēnei kaupapa.



He rawe te āhua o tōku pahikara hou. He whero me te mā ngā tae. E rua ngā wīra pango, e rua hoki ngā puringa maitai. E rua ngā pētara kirihou, kotahi te tūru hei nohoanga mōku. Ka pīataata i te rā me te mīharo hoki. E ai ki aku hoa ko tōku pahikara te tino pahikara.

Te whakamāramatanga

Te whakaahuatanga

Te whakakapinga

Kohia ōu whakaaro mō ngā mahi



Ka tuhi a Mariana i te ohia manomano hei kohikohi i ōna whakaaro mō āna mahi i runga i te pahikara. Ka āta whakaaro ia ki ngā kupumahi.

Āku mahi ki runga
i tōku pahikara

Aro ki te pupuri
i ngā puringa

Whakahuri
i ngā pētara

Eke pahikara

Tino tere te haere o Mariana i ētahi wā. Ka whakaaro ia ki ētahi kupu whakarite hei whakarite i tōna haere ki te rere o te hau.



Ka tere tōku haere

Ka tere tōku haere
pēnei me te hau





Tuhia he kōwae mō ngā mahi

Kua rite a Mariana ki te tuhi i te kōwae mō āna mahi i runga i tōna pahikara. Ka āta whakaaro ia ki te rerenga tuatahi hei whakatakoto i te kaupapa o te kōwae. Ka hāngai ngā rerenga e whai ana ki tēnei kaupapa.



Kei te ako tonu au ki te eke pahikara. Me tautoko mai tētahi i ahau ki te eke i tōku pahikara, i te mea he āhua teitei mōku. Mā tētahi ahau e pupuri i te tuatahi, i te mea me kaha aro ahau ki te pupuri ki ngā puringa, me te whakahuri i ngā pētara i te wā kotahi. Otirā, e mōhio ana ahau e kore e roa ka tere taku haere pēnei me te hau.

Tirohia ngā kōwae e rua o te whakaahuatanga.

Te kōwae tuatahi hei **whakaahua** i te āhua o te pahikara.

He rawe te āhua o tōku pahikara hou. He whero me te mā ngā tae. E rua ngā wīra pango, e rua hoki ngā puringa maitai. E rua ngā pētara kirihou, kotahi te tūru hei nohoanga mōku. Ka pīataata i te rā me te mīharo hoki. E ai ki aku hoa ko tōku pahikara te tino pahikara.

Te kōwae tuarua hei **whakaahua** i te mahi ki runga i te pahikara.

Kei te ako tonu au ki te eke pahikara. Me tautoko mai tētahi i ahau ki te eke i tōku pahikara, i te mea he āhua teitei mōku. Mā tētahi ahau e pupuri i te tuatahi, i te mea me kaha aro ahau ki te pupuri ki ngā puringa, me te whakahuri i ngā pētara i te wā kotahi. Otirā, e mōhio ana ahau e kore e roa ka tere taku haere pēnei me te hau.

Te whakamāramatanga

Te whakaahuatanga

Te whakakapinga

Te Whakakapinga



Hei whakakapi i tāna tuhinga ka whakaaro a Mariana ki tēnei pātai. Kātahi ka āta tuhituhi ia i te rerenga tuhituhi hei whakakapinga.

Me pēhea te whakarāpopoto i ōku whakaaro mō te pahikara?

*Pai ngā pahikara mā ngā tamariki
- whakahākoakoa
- hari ki wī ki wā*



Ki ahau nei, he tino pai ngā pahikara, i te mea ka whakahākoakoa i ngā tamariki, ā, ka hari i a koe ki wī, ki wā.

Te whakamāramatanga

Te whakaahuatanga

Te whakakapinga

Te Whakaahua Whaiaro a Mariana



Tirohia ngā wāhanga katoa o te tuhinga a Mariana.

Tōku Pahikara Hou

He pahikara hou tōku. I homai e ōku mātua hei koha mō taku huritau. Ko te pahikara nei te tino whiwhinga mōku, i te mea mai rā anō taku hiahia ki te whiwhi pahikara.

He rawe te āhua o tōku pahikara hou. He whero me te mā ngā tae. E rua ngā wīra pango, e rua hoki ngā puringa maitai. E rua ngā pētara kirihou, kotahi te tūru hei nohoanga mōku. Ka pīataata i te rā me te mīharo hoki. E ai ki aku hoa ko tōku pahikara te tino pahikara.

Kei te ako tonu au ki te eke pahikara. Me tautoko mai tētahi i ahau ki te eke i tōku pahikara, i te mea he āhua teitei mōku. Mā tētahi ahau e pupuri i te tuatahi, i te mea me kaha aro ahau ki te pupuri ki ngā puringa, me te whakahuri i ngā pētara i te wā kotahi. Otirā, e mōhio ana ahau e kore e roa ka tere taku haere pēnei me te hau.

Ki ahau nei, he tino pai ngā pahikara, i te mea ka whakahākoako i ngā tamariki, ā, ka hari i a koe ki wī, ki wā.



He Taurira Anō

Ko ngā taurira anō hei whakaatu i te whanaketanga o ngā āhuatanga reo, ngā tikanga tuhituhi me ngā kupu mō te whakaahua whaiaro.

Ka tirohia te tuhinga, ngā āhuatanga reo, me ngā wāhanga o ēnei taurira tuhinga.



He Whakaahua Whaiaro hei Taurira



*Ko te kurī a Raukura tōna tino hoa.
Nā tēnei ka puta mai te hiahia i a ia ki
te tuhi whakaahua whaiaro mōna.*

He Tino Nui Tōku Aroha mō Taku Kurī

He kurī iti tāku, ko Kurī tōna ingoa. He nui tōku aroha mōna, ā, ko ia taku tino hoa. He 'fox terrier' te momo o taku kurī. He pango, he mā hoki ana tae. He kaha tōna hiahia ki te pekepeke me te korikori.

He pakupaku noa iho a Kurī. He iti ana waewae, he poto ana huruhuru. He poto, he koi hoki ana taringa. He karu parauri ōna e whakaatu ana i tōna hīanga. Me tōna kaha ki te omaoma haere! He reka ki a ia te kai mīti me ngā pihikete kurī, heoi ko te kai pai rawa ki a ia ko tērā ka whakamomokatia e au māna.

I tō mātou whiwhinga i a ia he kaha kē ia ki te whai atu i tō mātou motokā. Ka nui taku māharahara ka tukia ia e te motokā, nō reira nāku ia i whakaako kia kua e whai atu. Kāore i te pai ki a ia te mātakitaki i a mātou e haere atu ana i te huarahi, engari kua mārama ia i nāianeī he haerenga poto noa iho tō mātou. Ka noho ia, ka tatari ki tō mātou hokinga mai.

He koi te hinengaro o Kurī ki tāku e tono atu. Ka taea e ia te niupepa te tiki, te noho ki raro, me te tū ki ngā waewae e rua. Kaingākau ana au ki a ia me tōna kaha ki te whakarongo. He kaiwhakaara pai hoki ia, i te mea he tino kaha ia ki te auau mehemea ka tae atu he tauhou ki tō mātou kāinga.

He nui taku whakapae ko te kurī te hoa pūmau mō te kōtiro, i te mea ko taku kurī e piri tahi ana ki a au i ngā wā katoa, me tōna whiore whiuwhiu, me tōna harikoa hoki.

Ngā Āhuratanga Reo



Tirohia ngā āhuratanga reo
kua whakamahia e Raukura
i tāna whakaahua whaiaro.

Te reo tautahi

au	mātou
tōku	taku
tāku	tō mātou

Te kupu ingoa

kurī	ingoa
hoa	tae
waewae	huruhuru
taringa	karu
whiore	

Te kupu āhua

mā	pango
kaha	pakupaku
iti	poto
koi	parauri
pūmau	

Te kupumahi

pekepeke	korikori
omaoma haere	whai
mātakitaki	noho
tatari	tiki
tū	whakarongo
auau	whiuwhiu

He Tino Nui Tōku Aroha mō Taku Kurī

He kurī iti tāku, ko Kurī tōna ingoa. He nui tōku aroha mōna, ā, ko ia taku tino hoa. He 'fox terrier' te momo o taku kurī. He pango, he mā hoki ana tae. He kaha tōna hiahia ki te pekepeke me te korikori.

He pakupaku noa iho a Kurī. He iti ana waewae, he poto ana huruhuru. He poto, he koi hoki ana taringa. He karu parauri ōna e whakaatu ana i tōna hīanga. Me tōna kaha ki te omaoma haere! He reka ki a ia te kai mīti me ngā pihikete kurī, heoi ko te kai pai rawa ki a ia ko tērā ka whakamomokatia e au māna.

I tō mātou whiwhinga i a ia he kaha kē ia ki te whai atu i tō mātou motokā. Ka nui taku māharahara ka tukia ia e te motokā, nō reira nāku ia i whakaako kia kaua e whai atu. Kāore i te pai ki a ia te mātakitaki i a mātou e haere atu ana i te huarahi, engari kua mārama ia i nāiane he haerenga poto noa iho tō mātou. Ka noho ia, ka tatari ki tō mātou hokinga mai.

He koi te hinengaro o Kurī ki tāku e tonu atu. Ka taea e ia te niupepa te tiki, te noho ki raro, me te tū ki ngā waewae e rua. Kaingākau ana au ki a ia me tōna kaha ki te whakarongo. He kaiwhakaara pai hoki ia, i te mea he tino kaha ia ki te auau mehemea ka tae atu he tauhuru ki tō mātou kāinga.

He nui taku whakapae ko te kurī te hoa pūmau mō te kōtiro, i te mea ko taku kurī e piri tahi ana ki a au i ngā wā katoa, me tōna whiore whiuwhiu, me tōna harikoa hoki.

Tirohia te whārangi 10 mō te whakamāramatanga o ēnei āhuratanga reo.



Ngā Wāhanga

Tirohia ngā wāhanga e whā o te whakaahua whaiaro a Raukura.

Te tapanga

Te whakamāramatanga

Te whakaahuatanga

Te whakakapinga

He Tino Nui Tōku Aroha mō Taku Kurī

He kurī iti tāku, ko Kurī tōna ingoa. He nui tōku aroha mōna, ā, ko ia taku tino hoa. He 'fox terrier' te momo o taku kurī. He pango, he mā hoki ana tae. He kaha tōna hiahia ki te pekepeke me te korikori.

He pakupaku noa iho a Kurī. He iti ana waewae, he poto ana huruhuru. He poto, he koi hoki ana taringa. He karu parauri ōna e whakaatu ana i tōna hīanga. Me tōna kaha ki te omaoma haere! He reka ki a ia te kai mīti me ngā pihikete kurī, heoi ko te kai pai rawa ki a ia ko tērā ka whakamomokatia e au māna.

I tō mātou whiwhinga i a ia he kaha kē ia ki te whai atu i tō mātou motokā. Ka nui taku māharahara ka tukia ia e te motokā, nō reira nāku ia i whakaako kia kaua e whai atu. Kāore i te pai ki a ia te mātakitaki i a mātou e haere atu ana i te huarahi, engari kua mārāma ia i nāiane he haerenga poto noa iho tō mātou. Ka noho ia, ka tatari ki tō mātou hokinga mai.

He koi te hinengaro o Kurī ki tāku e tonono atu. Ka taea e ia te niupepa te tiki, te noho ki raro, me te tū ki ngā waewae e rua. Kaingākau ana au ki a ia me tōna kaha ki te whakarongo. He kaiwhakaara pai hoki ia, i te mea he tino kaha ia ki te auau mehemea ka tae atu he tauhou ki tō mātou kāinga.

He nui taku whakapae ko te kurī te hoa pūmau mō te kōtiro, i te mea ko taku kurī e piri tahi ana ki a au i ngā wā katoa, me tōna whiore whiuwhiu, me tōna harikoa hoki.

Tirohia te whārangi 13 mō te whakamāramatanga o ēnei wāhanga.

He Whakaahua Whaiaro hei Taurira



*He tino nui te aroha o Keriana ki tōna koro.
He maha hoki ā rāua mahi tahi, nā reira a ia
ka tuhi i tēnei whakaahua whaiaro.*

He Tino Tangata Tōku Koroua

He tino tangata tōku koroua, he kaumātua matatau hoki. E whitu tekau mā rima tau te pakeke o tōku koro i tōna matenga. I a ia e ora ana he tino tawhiti ō māua kāinga, nā reira i whai wāhi noa iho māua ki te kite atu i a māua anō i ngā wā whakatā. He pātata tōna kāinga ki te ngahere, te wāhi pūmau mōna. E ai ki tāna, ki te kore te ngahere, ka kore hoki ko tātou. I reira tana kāinga mō te katoa o tana oranga. E ai ki ētahi tāngata, he pai kē ki a Koro te noho me tōna kotahi. I pērā hoki i muri i te matenga atu o tōku kuia.

Ki tōku nei mahara he kūwhewhewhewhe tōna kiri, he hiriwa ōna makawe. He roa, he mātotoru ōna tukemata, ā, i tautau ki runga i ōna karu. Nā tērā, i ētahi wā ka whakaaro au mō tōna āheinga ki te kite atu i raro i ōna tukemata. Nā te mea he teitei ake ia i ahau, i whakapae ahau ko ia tētahi tangata tāroaroa.

He koroua ngākau māhaki ia, me tōna harikoa i tōna kitenga atu i a mātou. He kaha nōna ki te menemene. Me tōna hiahia ki te whakaatu mai i āna momo mahi. He kaiako pai a Koro, ā, he maha aku akoranga ki ngā mea katoa, ki ngā mea o te ngahere hoki i a māua e noho tahi ana. He mōhio nōna ki ngā ingoa mō ngā rākau me ō rātou painga. Ka akiaki a Koro i ahau i ngā wā katoa me te kī, “Whakarongo mai, e Moko, he oranga kei roto i ēnei mahi.”

E mōhio ana a Koro e te tini tangata e noho ana ki te riu, ā, ki te māuiui tētahi ka haere atu ia me ana rongoā. Ka maharatia a Koro mō tōna ngākau māhaki me tōna kaha pupuri ki ngā tikanga a te Māori.

Heoi anō, ka maumahara ahau i ō māua hikoitanga i te ngahere ki te kohikohi rongoā me ōna ringa kaha nei e pupuri ana i ōku, e ārahi ana i a māua.

Ngā Āhuratanga Reo



Tirohia ngā āhuratanga reo
kua whakamahia e Keriana
i tāna whakaahua whaiaro.

Te reo tautahi

ahau māua
tātou

aku tōku
ō māua ōku

Te kupu ingoa

tangata kiri
makawe tukemata
karu ringa
rākau kaiako
ngākau

Te kupu āhua

matatau mōhio
kūwhewhewhe
hiriwa roa
mātotoru teitei
tāroaroa māhaki
pai harikoa
kaha

Te kupumahi

mahi whakaatu
kohikohi akiaki
menemene ārahi
pupuri

He Tino Tangata Tōku Koroua

He tino tangata tōku koroua, he kaumātua matatau hoki. E whitu tekau mā rima tau te pakeke o tōku koro i tōna matenga. I a ia e ora ana he tino tawhiti ō māua kāinga, nā reira i whai wāhi noa iho māua ki te kite atu i a māua anō i ngā wā whakatā. He pātata tōna kāinga ki te ngahere, te wāhi pūmau mōna. E ai ki tāna, ki te kore te ngahere, ka kore hoki ko tātou. I reira tana kāinga mō te katoa o tana orange. E ai ki ētahi tāngata, he pai kē ki a Koro te noho me tōna kotahi. I pērā hoki i muri i te matenga atu o tōku kuia.

Ki tōku nei mahara he kūwhewhewhe tōna kiri, he hiriwa ōna makawe. He roa, he mātotoru ōna tukemata, ā, i tautau ki runga i ōna karu. Nā tērā, i ētahi wā ka whakaaro au mō tōna āheinga ki te kite atu i raro i ōna tukemata. Nā te mea he teitei ake ia i ahau, i whakapae ahau ko ia tētahi tangata tāroaroa.

He koroua ngākau māhaki ia, me tōna harikoa i tōna kitenga atu i a mātou. He kaha nōna ki te menemene. Me tōna hiahia ki te whakaatu mai i āna momo mahi. He kaiako pai a Koro, ā, he maha aku akoranga ki ngā mea katoa, ki ngā mea o te ngahere hoki i a māua e noho tahi ana. He mōhio nōna ki ngā ingoa mō ngā rākau me ō rātou painga. Ka akiaki a Koro i ahau i ngā wā katoa me te kī, “Whakarongo mai, e Moko, he orange kei roto i ēnei mahi.”

E mōhio ana a Koro e te tini tangata e noho ana ki te riu, ā, ki te māuiui tētahi ka haere atu ia me ana rongoā. Ka maharatia a Koro mō tōna ngākau māhaki me tōna kaha pupuri ki ngā tikanga a te Māori.

Heoi anō, ka maumahara ahau i ō māua hikoitanga i te ngahere ki te kohikohi rongoā me ōna ringa kaha nei e pupuri ana i ōku, e ārahi ana i a māua.

Tirohia te whārangi 10 mō te whakamāramatanga o ēnei āhuratanga reo.



Ngā Wāhanga

Tirohia ngā wāhanga e whā o te whakaahua whaiaro a Keriana.

Te tapanga

He Tino Tangata Tōku Koroua

Te whakamāramatanga

He tino tangata tōku koroua, he kaumātua matatau hoki. E whitu tekau mā rima tau te pakeke o tōku koro i tōna matenga. I a ia e ora ana he tino tawhiti ō māua kāinga, nā reira i whai wāhi noa iho māua ki te kite atu i a māua anō i ngā wā whakatā. He pātata tōna kāinga ki te ngahere, te wāhi pūmau mōna. E ai ki tāna, ki te kore te ngahere, ka kore hoki ko tātou. I reira tana kāinga mō te katoa o tana oranga. E ai ki ētahi tāngata, he pai kē ki a Koro te noho me tōna kotahi. I pērā hoki i muri i te matenga atu o tōku kuia.

Te whakaahuatanga

Ki tōku nei mahara he kūwhewhewhewhe tōna kiri, he hiriwa ōna makawe. He roa, he mātotoru ōna tukemata, ā, i tautau ki runga i ōna karu. Nā tērā, i ētahi wā ka whakaaro au mō tōna āheinga ki te kite atu i raro i ōna tukemata. Na te mea he teitei ake ia i ahau, i whakapae ahau ko ia tētahi tangata tāroaroa.

He koroua ngākau māhaki ia, me tōna harikoa i tōna kitenga atu i a mātou. He kaha nōna ki te menemene. Me tōna hiahia ki te whakaatu mai i āna momo mahi. He kaiako pai a Koro, ā, he maha aku akoranga ki ngā mea katoa, ki ngā mea o te ngahere hoki i a māua e noho tahi ana. He mōhio nōna ki ngā ingoa mō ngā rākau me ō rātou painga. Ka akiaki a Koro i ahau i ngā wā katoa me te kī, “Whakarongo mai, e Moko, he oranga kei roto i ēnei mahi.”

Te whakakapinga

E mōhioitia ana a Koro e te tini tangata e noho ana ki te riu, ā, ki te māuiui tētahi ka haere atu ia me ana rongoā. Ka maharatia a Koro mō tōna ngākau māhaki me tōna kaha pupuri ki ngā tikanga a te Māori.

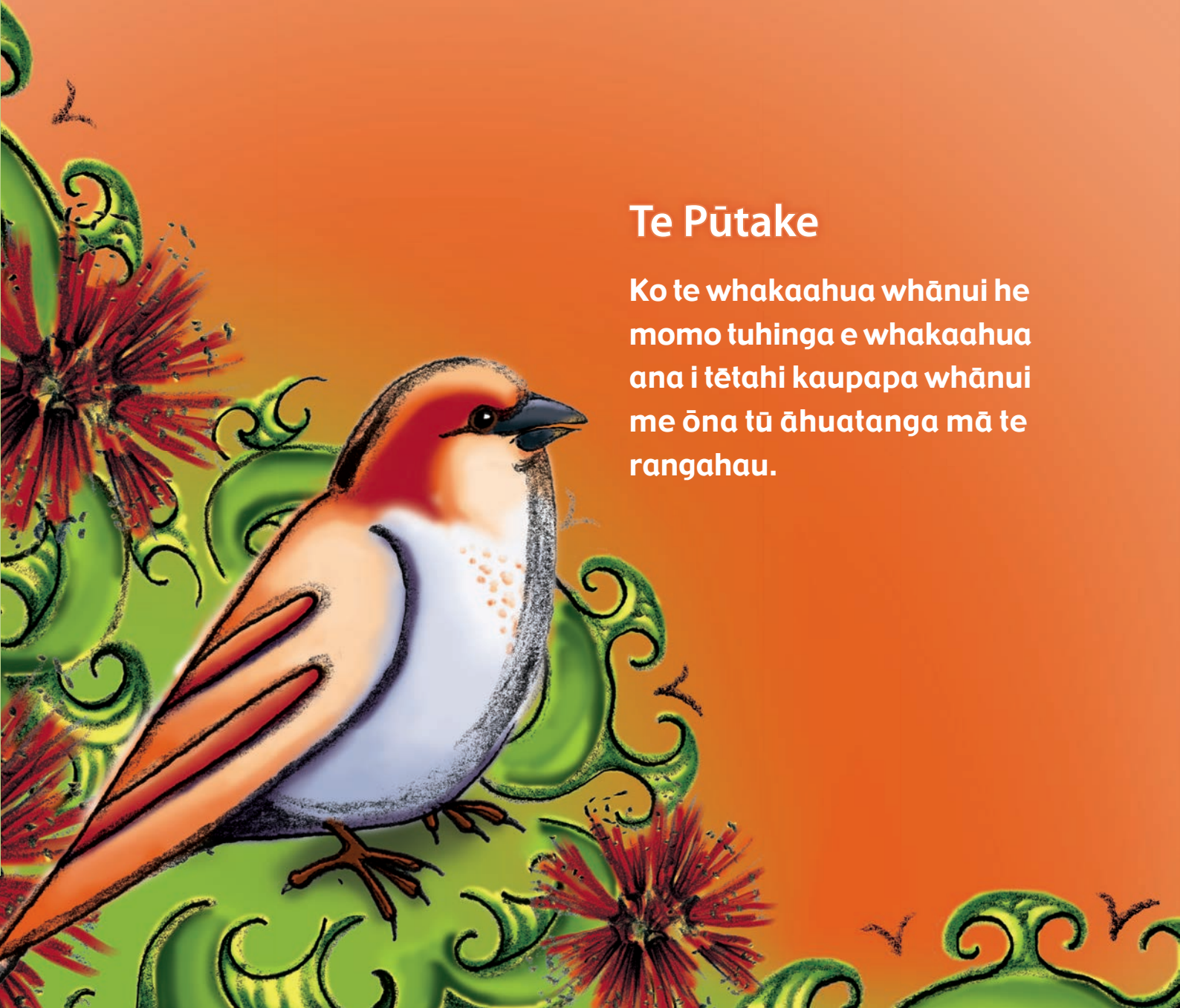
Heoi anō, ka maumahara ahau i ō māua hikoitanga i te ngahere ki te kohikohi rongoā me ōna ringa kaha nei e pupuri ana i ōku, e ārahi ana i a māua.

Tirohia te whārangi 13 mō te whakamāramatanga o ēnei wāhanga.

Te Whakaahua Whānui

Te Pūtake

Ko te whakaahua whānui he momo tuhinga e whakaahua ana i tētahi kaupapa whānui me ōna tū āhuatanga mā te rangahau.



He Whakaahua Whānui hei Tauira

Ka whakaatu au i te whakaahua whānui kua tuhia e Rāwiri mō te manu aute.



Ka whakaaturia:

- Ngā āhuatanga reo
- Ngā wāhanga
- Te ara tuhituhi i whāia e Rāwiri

Tirohia tāna tuhinga:

Te Manu Aute



Ko te manu aute, te manu tukutuku rānei, he taonga rere i hangaia e te Māori i ngā rau tau ki muri. E ai ki te kōrero he hononga te manu aute i waenganui i te tangata me te ao wairua.

I aua rā he karere ngā manu aute nunui ka tohu i ngā toimahatanga kei te heke. Ka tukuna hoki e ngā manu aute he karere ki ngā atua mai i te tangata. Heoi, ko ngā mea iti i hangaia hei taonga korikori mā te tamariki.

I hangaia ētahi o ngā manu aute kia pērā te rite ki te manu, me te tangata hoki. He pērā hoki te rahi ki aua mea. He parirau māmā ōna. Ko te anga he peka rākau, ā, he whiore roa ki ētahi, he whiore poto ki ētahi atu.

He maha ngā taputapu kua whakamahia. Kua hangaia ētahi me te maro aute, arā, te maro kua hangaia i te kiri o te rākau aute. I whakarākeingia ētahi ki te huruhuru kurī, ngā raukura manu, me ngā anga moana hoki.

I ēnei rā, ka hanga, ka whakarere hoki te tangata i te manu aute hei taonga korikori mā te tamariki, hei whakangahau hoki i a rātou.

Ngā tohutoro

Art New Zealand. *Ancient Māori Kites*. I tangohia i te 11/10/07 mai i <http://www.art-newzealand.com/Issues1to40/kites.htm>

New Zealand in History. *Traditional Māori sport and games: Māori kite flying*. I tangohia i te 11/10/07 mai i <http://history-nz.org/kite.html>

Ngā Āhuatanga Reo o te Whakaahua Whānui



Ka tirohia ētahi o ngā āhuatanga reo o te whakaahua whānui:

- Te kupu ingoa
- Te kupu āhua
- Te kupumahi
- Te kupu *te* hei tohu i te tini
- Te reo-ā-kaupapa

Tirohia ngā whārangi e whai ake nei.

Te Whakamāramatanga o ngā Āhuatanga Reo

Te kupu ingoa

Ko tā te kupu ingoa **he tapa i tētahi mea**. I roto i te whakaahua whānui ka tapaina ngā wāhanga o tētahi kaupapa me ētahi atu o ōna āhuatanga.

Hei tauira:

manu	aute
huruhuru	anga
tangata	tamariki
peka	karere
whiore	raukura
parirau	maro

Te kupu āhua

Ko tā te kupu āhua **he tohu i te āhua o tētahi mea**. I roto i te whakaahua whānui ka whakaahuatia te āhua o tētahi kaupapa me ōna wāhanga.

Hei tauira:

Ko te anga he peka **rākau**, ā, he whiore **roa** ki ētahi, he whiore **poto** ki ētahi atu.

Te kupumahi

Ko tā te kupumahi **he tohu i tētahi mahi**. I roto i te whakaahua ka tohu ngā kupumahi i ngā mahi e pā ana ki te kaupapa.

Hei tauira:

I aua rā he karere ngā manu aute nunui ka **tohu** i ngā toimahatanga kei te heke. Ka **tukuna** hoki e ngā manu aute he karere ki ngā atua mai i te tangata. Heoi, ko ngā mea iti i **hangaia** hei taonga **korikori** mā te tamariki.

Te kupu te hei tohu i te tini

Ko tā tēnei **te** he tohu e whakaahua ai te kaituhi i **te tini**, kua ko te kotahi.

Hei tauira:

Ko **te** manu aute, **te** manu tukutuku rānei.
kia pērā te rite ki **te** manu, me **te** tangata

Te reo-ā-kaupapa

Ko te reo-ā-kaupapa **ngā kupu e tino hāngai ana ki te kaupapa**. Kāore pea ēnei kupu e mōhiotia whānuitia ana.

Hei tauira:

manu tukutuku	manu aute
maro aute	



Tirohia ngā āhuatanga reo
kua whakamahia e Rāwiri
i tāna whakaahua whaiaro.

Te kupu ingoa

manu tangata
peka huruhuru
raukura tamariki
karere whiore
parirau

Te kupu āhua

nunui iti
māmā roa
poto

Te kupumahi

hangaia tohu
tukuna korikori
whakarākeingia
whakarere
whakangahau

Te kupu te hei tohu i te tini

te manu tukutuku
te manu aute
te tangata
te manu

Te reo-ā-kaupapa

manu aute
manu tukutuku
maro aute

Te Manu Aute

Ko te manu aute, te manu tukutuku rānei, he taonga rere i hangaia e te Māori i ngā rau tau ki muri. E ai ki te kōrero he hononga te manu aute i waenganui i te tangata me te ao wairua.

I aua rā he karere ngā manu aute nunui ka tohu i ngā toimahatanga kei te heke. Ka tukuna hoki e ngā manu aute he karere ki ngā atua mai i te tangata. Heoi, ko ngā mea iti i hangaia hei taonga korikori mā te tamariki.

I hangaia ētahi o ngā manu aute kia pērā te rite ki te manu, me te tangata hoki. He pērā hoki te rahi ki aua mea. He parirau māmā ōna. Ko te anga he peka rākau, ā, he whiore roa ki ētahi, he whiore poto ki ētahi atu.

He maha ngā taputapu kua whakamahia. Kua hangaia ētahi me te maro aute, arā, te maro kua hangaia i te kiri o te rākau aute. I whakarākeingia ētahi ki te huruhuru kurī, ngā raukura manu, me ngā anga moana hoki.

I ēnei rā, ka hanga, ka whakarere hoki te tangata i te manu aute hei taonga korikori mā te tamariki, hei whakangahau hoki i a rātou.

Ngā tohutoro

Art New Zealand. *Ancient Māori Kites*. I tangohia i te 11/10/07 mai i <http://www.art-newzealand.com/Issues1to40/kites.htm>

New Zealand in History. *Traditional Māori sport and games: Māori kite flying*. I tangohia i te 11/10/07 mai i <http://history-nz.org/kite.html>

Ngā Wāhanga o te Whakaahua Whānui



E whā ngā wāhanga o te whakaahua whānui:

- 1 Te tapanga
2. Te whakamāramatanga
3. Te whakaahuatanga
4. Te whakakapinga

Tirohia ngā whārangi e whai ake nei.

Te Whakamāramatanga o ngā Wāhanga

Te tapanga

Hei tāutu i te kaupapa o te whakaahua.

Te whakamāramatanga

Hei whakamōhio atu ki te kaipānui i te kaupapa o te tuhinga,
hei whakamārama hoki i ētahi o ōna āhuatanga matua.

Te whakaahuatanga

Hei whakamōhio atu ki te kaipānui i te āhua me ngā
mahi o te kaupapa kua whiriwhiria.

Te whakakapinga

Hei whakarāpopoto, hei whakakapi hoki i te tuhinga ki
tētahi whakaaro whānui.





Tirohia ngā wāhanga e whā o te whakaahua whānui a Rāwiri. Kua tāpiritia hoki ngā tohutoro hei whakamōhio atu ki te kaipānui nō hea te mātauranga.

Te tapanga

Te Manu Aute

Te whakamāramatanga

Ko te manu aute, te manu tukutuku rānei, he taonga rere i hangaia e te Māori i ngā rau tau ki muri. E ai ki te kōrero he hononga te manu aute i waenganui i te tangata me te ao wairua.

Te whakaahuatanga

I aua rā he karere ngā manu aute nunui ka tohu i ngā toimahatanga kei te heke. Ka tukuna hoki e ngā manu aute he karere ki ngā atua mai i te tangata. Heoi, ko ngā mea iti i hangaia hei taonga korikori mā te tamariki.

I hangaia ētahi o ngā manu aute kia pērā te rite ki te manu, me te tangata hoki. He pērā hoki te rahi ki aua mea. He parirau māmā ōna. Ko te anga he peka rākau, ā, he whiore roa ki ētahi, he whiore poto ki ētahi atu.

He maha ngā taputapu kua whakamahia. Kua hangaia ētahi me te maro aute, arā, te maro kua hangaia i te kiri o te rākau aute. I whakarākeingia ētahi ki te huruhuru kurī, ngā raukura manu, me ngā anga moana hoki.

Te whakakapinga

I ēnei rā, ka hanga, ka whakarere hoki te tangata i te manu aute hei taonga korikori mā te tamariki, hei whakangahau hoki i a rātou.

Ngā tohutoro

Art New Zealand. *Ancient Māori Kites*. I tangohia i te 11/10/07 mai i <http://www.art-newzealand.com/Issues1to40/kites.htm>

New Zealand in History. *Traditional Māori sport and games: Māori kite flying*. I tangohia i te 11/10/07 mai i <http://history-nz.org/kite.html>

He Ara Tuhituhi i te Whakaahua Whānui

Ko te ara tuhituhi nei hei āwhina i te kaituhi ki te whakarite me te whakatakoto i ngā wāhanga o te tuhinga.

Erima ngā wāhanga o tēnei ara tuhituhi:

1. Te whakarite i te horopaki o te tuhinga
2. Te rangahau i te mātauranga

Te whakarite me te tuhituhi i:

3. Te whakamāramatanga
4. Te whakaahuatanga
5. Te whakakapinga

Kia mahara ake – kia tutuki pai ai te mahi tuhituhi, me matapaki ia wāhanga o te ara e te kaituhi mā tētahi huarahi matapaki.



He Ara Tuhituhi

Te horopaki

Whakaarohia:

1. Te pūtake
2. Ngā kaipānui
3. Te momo tuhinga
4. Te tapanga

Te rangahau

- Kohia ōu whakaaro
Tuhia ngā mea kua mōhiotia kētia mō te kaupapa.
- Whakaarohia ngā pātai rangahau
Hangaia ētahi pātai e hiahia ana koe ki te whakautu.
- Whiriwhiria te puna mātauranga mō te rangahau mai i te rārangi nei:
 - he pukapuka
 - he ipurangi
 - he rīpene/kōpae ataata
 - he niupepa
 - he uiuitanga
- Rapua ngā whakautu ki ngā pātai rangahau, tuhia hei tuhinga tipoka
- Tuhia ngā tohutoro o te puna mātauranga kua whakamahia

Te whakamāramatanga

- Whakaritea te whakamāramatanga
- Tuhia te whakamāramatanga

Te whakaahuatanga

- Whakaritea te whakaahuatanga
- Tuhia he kōwae mō te mahi me te āhua

Te whakakapinga

- Whakaritea te whakakapinga
- Tuhia te whakakapinga

I whai a Rāwiri i tēnei huarahi hei tuhituhi i tāna whakaahua whānui mō te manu aute. Tirohia ngā whārangi e whai ake nei.

Te Horopaki



Ko te mahi tuatahi mā te kaituhi, ko te whakaaro ki te horopaki o tāna tuhinga.

Ka whakautu ia i ēnei pātai:

1. He aha te pūtake o te tuhinga?
2. Mā wai te tuhinga?
3. He aha te momo tuhinga?
4. He aha tētahi tapanga mō te tuhinga?

Tirohia ngā whakautu a Rāwiri ki ngā pātai mō te horopaki o tāna tuhinga. Ka whiriwhiri a Rāwiri i tētahi tapanga kia hāngai pū ōna whakaaro ki tāna kaupapa. Ka taea e ia te tīni mēnā he whakaaro atu anō ka puta mai.



- | | |
|----------------------------|---|
| 1. Te pūtake: | He whakaatu i ētahi tū āhuatanga o te manu aute |
| 2. Ngā kaipānui: | Ōku hoa mahi |
| 3. Te momo tuhinga: | He whakaahua whānui |
| 4. Te tapanga: | Te Manu Aute |

Te Rangahau

Ka huri a Rāwiri ki te rapu mātauranga e pā ana ki te manu aute.

Tuatahi, ka kohikohi ia i ōna whakaaro.

Tuarua, ka hanga i ētahi pātai rangahau e hāngai ana ki ngā wāhanga o te tuhinga.

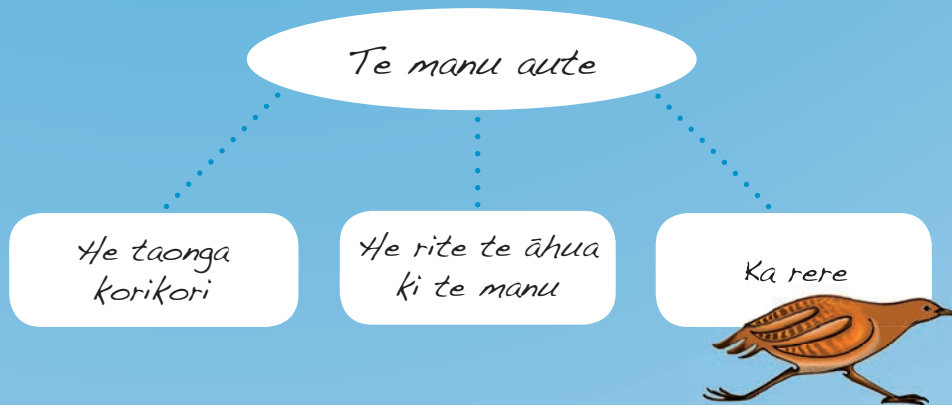
Tuatoru, ka whiriwhiri i te puna mātauranga.

Tuawhā, ka rapu i ngā whakautu ki ngā pātai rangahau, ka tuhituhi hei tuhinga tīpoka.

Tuarima, ka tuhituhi i ngā tohutoro mō te tuhinga.

Kohia ōu whakaaro

I te tuatahi, ka whakatakoto a Rāwiri i ngā mea e mōhio kē ana ia mō te kaupapa. Tērā pea kei te tika ōna whakaaro me ōna mōhiotanga, tērā pea kāore i te tika. Mā te rangahau ia ka mōhio.



Whakaarohia ngā pātai rangahau



Ka whakaaro a Rāwiri ki te mātauranga e hiahia ana ia ki te mōhio, kātahi ka whakatakoto i ngā pātai rangahau. Ka hāngai āna pātai ki te whakamāramatanga o te manu aute, tōna āhua me āna mahi.



Āku pātai rangahau

Te whakamāramatanga

1. He aha te manu aute?
2. I hangaia te manu aute hei aha?
3. He ingoa anō mō te manu aute?

Te āhua

4. He pēhea te āhua o te manu aute?
5. He aha ētahi taputapu i whakamahia ki te hanga i te manu aute?

Te mahi

6. I pēhea te whakamahi i te manu aute?

Whiriwhiria te puna mātauranga hei rangahau

Ka tirohia ēnei puna mātauranga e Rāwiri:

- He pukapuka
- Te ipurangi

Rapua ngā whakautu ki ngā pātai rangahau, tuhia hei tuhinga tīpoka



Kei te ipurangi i kitea e Rāwiri e rua ngā pae tukutuku pai e hāngai ana ki te manu aute. I a ia e pānui ana i ēnei pae tukutuku:

- Ka tuhi a Rāwiri i ngā tuhinga tīpoka hei whakautu i ngā pātai
- Ka rapu i ngā whakamārama mō te reo-ā-kaupapa ka puta mai

Āku pātai rangahau

1. He aha te manu aute?
2. I hangaia te manu aute hei aha?
3. He ingoa anō mō te manu aute?
4. He pēhea te āhua o te manu aute?
5. He aha ētahi taputapu i whakamahia ki te hanga i te manu aute?
6. I pēhea te whakamahi i te manu aute?

Ngā whakautu



- he taonga whakarere nā te Māori
- hei hono ki te ao wairua
- manu tukutuku
- te āhua me te rahi o te manu, tangata rānei
- parirau māmā
- whiore poto, roa rānei
- peka rākau, raukura, maro aute (he maro kua hangaia me te kirirākau o te rākau aute), huruhuru kuri, anga moana
- ngā mea nui - ka tuku karere ki ngā atua, ka tohu i ngā toimahatanga
- ngā mea iti - taonga korikori mā ngā tamariki

Tuhia ngā tohutoro o te puna mātauranga

Ka tuhi a Rāwiri i ngā tohutoro mō ngā pae tukutuku kua whakamahia e ia. Kia mutu tāna tuhinga, ka tāpiritia atu ngā tohutoro.

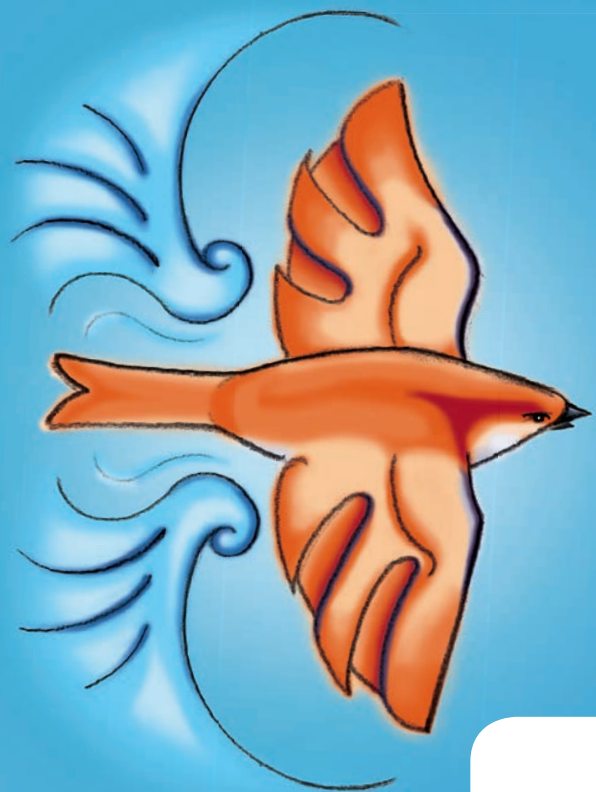


Ngā tohutoro

Art New Zealand. Ancient Māori Kites. I tangohia i te 11/10/07 mai i <http://www.art-newzealand.com/Issues1to40/kites.htm>

New Zealand in History. Traditional Māori sport and games: Māori kite flying. I tangohia i te 11/10/07 mai i <http://history-nz.org/kite.html>

Te Whakamāramatanga



Ka titiro a Rāwiri ki āna tuhinga tīpoka mō te whakamāramatanga, kātahi ka āta whakawhānui hei rerenga tuhituhi.

Ngā tuhinga tīpoka

- he taonga whakarere nā te Māori
- hei hono ki te ao wairua
- manu tukutuku

Te kaupapa



Ko te manu aute, te manu tukutuku rānei, he taonga rere i hangaia e te Māori i ngā rau tau ki muri. E ai ki te kōrero he hononga te manu aute i waenganui i te tangata me te ao wairua.

Ētahi āhuatanga matua

Te whakamāramatanga

Te whakaahuatanga

Te whakakapinga

Te Whakaahuatanga

Ka titiro anō a Rāwiri ki āna tuhinga tīpoka mō te whakaahuatanga.

I te tuatahi, ka whakawhānui ia i āna tuhinga tīpoka mō te mahi a te manu aute.

I te tuarua, ka whakawhānui ia i āna tuhinga tīpoka mō te āhua.

Ka āta whakaaro ia ki te rerenga tuatahi o ia kōwae hei whakatakoto i te kaupapa.

Tuhia he kōwae mō te mahi me te āhua

Ngā tuhinga tīpoka

I pēhea te whakamahi i te manu aute?

- ngā mea nui - ka tuku karere ki ngā atua, ka tohu i ngā toimahatanga
- ngā mea iti - taonga korikori mā ngā tamariki

He pēhea te āhua o te manu aute?

- te āhua me te rahi o te manu, tangata rānei
- anga - peka rākau
- parirau māmā
- whiore poto, roa rānei

He aha ētahi taputapu i whakamahia ki te hanga i te manu aute?

raukura, maro aute (he maro kua hangaia me te kirirākau o te rākau aute), huruhuru kuri, anga moana

Ngā rerenga tuhituhi



I aua rā he karere ngā manu aute nunui ka tohu i ngā toimahatanga kei te heke. Ka tukuna hoki e ngā manu aute he karere ki ngā atua mai i te tangata. Heoi, ko ngā mea iti i hangaia hei taonga korikori mā te tamariki.

I hangaia ētahi o ngā manu aute kia pērā te rite ki te manu, me te tangata hoki. He pērā hoki te rahi ki aua mea. He parirau māmā ōna. Ko te anga he peka rākau, ā, he whiore roa ki ētahi, he whiore poto ki ētahi atu.

He maha ngā taputapu kua whakamahia. Kua hangaia ētahi me te maro aute, arā, te maro kua hangaia i te kiri o te rākau aute. I whakarākeingia ētahi ki te huruhuru kuri, ngā raukura manu, me ngā anga moana hoki.

Te whakamāramatanga

Te whakaahuatanga

Te whakakapinga

Te Whakakapinga



Hei whakakapi i tāna tuhinga, ka whakaaro a Rāwiri ki tētahi whakaaro whānui mō ngā mea kua tuhia e ia. Kātahi ka āta tuhi hei rerenga tuhituhi mō te whakakapinga.

He aha tētahi whakaaro whānui hei whakarāpopoto i te tuhinga?

He taonga korikori, taonga whakangahau tonu mā te tamariki



I ēnei rā, ka hanga, ka whakarere hoki te tangata i te manu aute hei taonga korikori mā te tamariki, hei whakangahau hoki i a rātou.

Te whakamāramatanga

Te whakaahuatanga

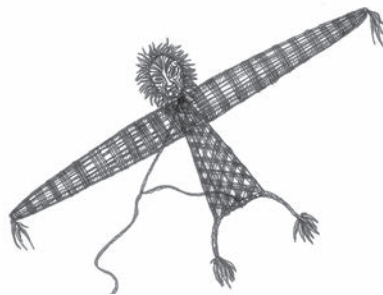
Te whakakapinga

Te Whakaahua Whānui a Rāwiri



Tirohia ngā wāhanga katoa o te tuhinga a Rāwiri.

Te Manu Aute



Ko te manu aute, te manu tukutuku rānei, he taonga rere i hangaia e te Māori i ngā rau tau ki muri. E ai ki te kōrero he hononga te manu aute i waenganui i te tangata me te ao wairua.

I aua rā he karere ngā manu aute nunui ka tohu i ngā toimahatanga kei te heke. Ka tukuna hoki e ngā manu aute he karere ki ngā atua mai i te tangata. Heoi, ko ngā mea iti i hangaia hei taonga korikori mā te tamariki.

I hangaia ētahi o ngā manu aute kia pērā te rite ki te manu, me te tangata hoki. He pērā hoki te rahi ki aua mea. He parirau māmā ōna. Ko te anga he peka rākau, ā, he whiore roa ki ētahi, he whiore poto ki ētahi atu.

He maha ngā taputapu kua whakamahia. Kua hangaia ētahi me te maro aute, arā, te maro kua hangaia i te kiri o te rākau aute. I whakarākeingia ētahi ki te huruhuru kurī, ngā raukura manu, me ngā anga moana hoki.

I ēnei rā, ka hanga, ka whakarere hoki te tangata i te manu aute hei taonga korikori mā te tamariki, hei whakangahau hoki i a rātou.

Ngā tohutoro

Art New Zealand. *Ancient Māori Kites*. I tangohia i te 11/10/07 mai i <http://www.art-newzealand.com/Issues1to40/kites.htm>

New Zealand in History. *Traditional Māori sport and games: Māori kite flying*. I tangohia i te 11/10/07 mai i <http://history-nz.org/kite.html>

He Taurira Anō

Ko ngā taurira anō hei whakaatu i te whanaketanga o ngā āhuratanga reo, ngā tikanga tuhituhi me ngā kupu mō te whakaahua whānui.

Ka tirohia te tuhinga, ngā āhuratanga reo, me ngā wāhanga o ēnei taurira tuhinga.



He Whakaahua Whānui hei Tauira



He tino kaieke pahikara a Katarina. He mīharo ki
a ia ngā āhuetanga katoa o te pahikara. Koinā
ia i tuhi whakaahua whānui mō te pahikara.

Te Pahikara

Ko te pahikara he tū mīhini ka whakamahia e te tangata kia haere ki wī, ki wā. I whakatenehia te pahikara i ngā rua rau tau ki muri ki Uropi. E ai ki tā ētahi, neke atu i te kotahi piriona pahikara e whakamahia ana e tātou huri noa i te ao.

Ko ngā pahikara e mōhiotia whānuitia ana ko ērā kua hangaia me ngā wīra, ngā puringa, me ngā pētara e rua, me tētahi nohoanga. Kua rerekē anō te hanga o te pahikara i ngā tau kua hipa atu. Hei tauira, ko ētahi kua whakahoahoatia mō ngā tāngata tokorua, ā, ko ētahi atu kotahi noa iho te wīra.

Mā te kaha o te tangata te pahikara e whakahaere. Me noho te tangata ki te nohoanga me te pupuri hoki i ngā puringa i te wā kotahi. Ka pana i ngā pētara, ā, ka huri haere ngā wīra. Mā tēnei ka neke whakamua te pahikara.

I ngā tau kua hipa atu ko te pahikara te tino mīhini kawē tangata i ētahi whenua o tēnei ao, ā, kei te pērā tonu i ēnei rā, ahakoa te nui haere o ngā motokā. Otirā, he maha ngā momo pahikara mō ngā mahi i tua atu i te kawē tangata noa iho. Ko ētahi mō ngā momo whakataetae ki ngā rori, ki ngā huarahi kei ngā maunga hoki. Ko ētahi atu mō te ngahau hoki.

Ka tū tonu te painga a te tangata ki te eke pahikara i ngā tau kei te heke, ahakoa kāore i te pērā te tere o te pahikara ki te motokā.

Ngā tohutoro

Wikipedia, The Free Encyclopedia. *Bicycles*.

I tangohia i te 09/10/07, mai i <http://en.wikipedia.org/wiki/Bikes>

Ngā Āhuatanga Reo



Tirohia ngā āhuatanga reo
kua whakamahia e Katarina.

Te kupu ingoa

pahikara
mīhini
wīra
nohoanga
motokā

Te kupu āhua

tere

Te kupumahi

kawe
pana
huri haere
neke whakamua
tū
eke

Te kupu te hei tohu i te tini

te pahikara
te tangata

Te reo-ā-kaupapa

puringa
pētara
nohoanga

Te Pahikara

Ko te pahikara he tū mīhini ka whakamahia e te tangata kia haere ki wī, ki wā. I whakatenehia te pahikara i ngā rua rau tau ki muri ki Uropi. E ai ki tā ētahi, neke atu i te kotahi piriona pahikara e whakamahia ana e tātou huri noa i te ao.

Ko ngā pahikara e mōhiotia whānuitia ana ko ērā kua hangaia me ngā wīra, ngā puringa, me ngā pētara e rua, me tētahi nohoanga. Kua rerekē anō te hanga o te pahikara i ngā tau kua hipa atu. Hei tauira, ko ētahi kua whakahoahoatia mō ngā tāngata tokorua, ā, ko ētahi atu kotahi noa iho te wīra.

Mā te kaha o te tangata te pahikara e whakahaere. Me noho te tangata ki te nohoanga me te pupuri hoki i ngā puringa i te wā kotahi. Ka pana i ngā pētara, ā, ka huri haere ngā wīra. Mā tēnei ka neke whakamua te pahikara.

I ngā tau kua hipa atu ko te pahikara te tino mīhini kawē tangata i ētahi whenua o tēnei ao, ā, kei te pērā tonu i ēnei rā, ahakoa te nui haere o ngā motokā. Otirā, he maha ngā momo pahikara mō ngā mahi i tua atu i te kawē tangata noa iho. Ko ētahi mō ngā momo whakataetae ki ngā rori, ki ngā huarahi kei ngā maunga hoki. Ko ētahi atu mō te ngahau hoki.

Ka tū tonu te painga a te tangata ki te eke pahikara i ngā tau kei te heke, ahakoa kāore i te pērā te tere o te pahikara ki te motokā.

Ngā tohutoro

Wikipedia, The Free Encyclopedia. *Bicycles*.

I tangohia i te 09/10/07, mai i <http://en.wikipedia.org/wiki/Bikes>

Tirohia te whārangi 36 mō te whakamāramatanga o ēnei āhuatanga reo.



Ngā Wāhanga

Tirohia ngā wāhanga e whā o te whakaahua whaiaro a Katarina. Kua tāpiritia hoki ngā tohutoro hei whakamōhio atu ki te kaipānui nō hea te mātauranga.

Te tapanga

Te whakamāramatanga

Te whakaahuatanga

Te whakakapinga

Te Pahikara

Ko te pahikara he tū mīhini ka whakamahia e te tangata kia haere ki wī, ki wā. I whakatenehia te pahikara i ngā rau tau ki muri ki Uropi. E ai ki tā ētahi, neke atu i te kotahi piriona pahikara e whakamahia ana e tātou huri noa i te ao.

Ko ngā pahikara e mōhiohia whānuitia ana ko ērā kua hangaia me ngā wīra, ngā puringa, me ngā pētara e rua, me tētahi nohoanga. Kua rerekē anō te hanga o te pahikara i ngā tau kua hipa atu. Hei tauira, ko ētahi kua whakahoahoatia mō ngā tāngata tokorua, ā, ko ētahi atu kotahi noa iho te wīra.

Mā te kaha o te tangata te pahikara e whakahaere. Me noho te tangata ki te nohoanga me te pupuri hoki i ngā puringa i te wā kotahi. Ka pana i ngā pētara, ā, ka huri haere ngā wīra. Mā tēnei ka neke whakamua te pahikara.

I ngā tau kua hipa atu ko te pahikara te tino mīhini kawē tangata i ētahi whenua o tēnei ao, ā, kei te pērā tonu i ēnei rā, ahakoa te nui haere o ngā motokā. Otirā, he maha ngā momo pahikara mō ngā mahi i tua atu i te kawē tangata noa iho. Ko ētahi mō ngā momo whakataetae ki ngā rori, ki ngā huarahi kei ngā maunga hoki. Ko ētahi atu mō te ngahau hoki.

Ka tū tonu te painga a te tangata ki te eke pahikara i ngā tau kei te heke, ahakoa kāore i te pērā te tere o te pahikara ki te motokā.

Ngā tohutoro

Wikipedia, The Free Encyclopedia. *Bicycles*.

I tangohia i te 09/10/07, mai i <http://en.wikipedia.org/wiki/Bikes>

Tirohia te whārangi 39 mō te whakamāramatanga o ēnei wāhanga.

He Whakaahua Whānui hei Taurira



He tino mōhio nō Huia ki ngā āhuetanga o ngā momo kararehe maha. Ko te pekapeka tētahi kararehe taketake nō Aotearoa e tino pai ana ki a ia. Ka tuhi a Huia i tētahi whakaahua whānui e whakatauhia ana i ngā āhuetanga o te pekapeka.

Te Pekapeka

Ko te pekapeka te tū kararehe ngote ū taketake anake ka noho ki te mata o te whenua i Aotearoa. Ka kitea te tini o ngā momo pekapeka ki ngā tōpito katoa o te ao, engari kāore i te pērā te maha ki Aotearoa. I ngā wā o mua e toru ngā momo pekapeka i Aotearoa nei, engari kua mate haere noa tētahi momo. E ai ki ētahi, i ahu mai te pekapeka i ngā whitu tekau miriona tau ki muri.

Kei ngā wāhi tawhito rawa o te ngahere ngā kāinga noho o te pekapeka. Ka kai rātou i ngā momo ngāngara, ngā huarākau, te wai-hua, me te wai-putiputi. Kua tino rerekē ō rātou tinana i ngā tau kua hipa atu kia pai mō ngā tū āhuetanga o ō rātou kāinga noho. Hei taurira, he parirau ō rātou kia taea e rātou te rere i a rātou e hopu kai ana, ā, he matihao koi ō rātou mō te tīkaro ki ngā rākau pirau ki te rapu kai. Mā te ihu hoki rātou hongī kai ai.

Ka noho te pekapeka i roto i ngā wāhi pōuri, ka puta i te pō ki te kimi kai. Ko ōna taringa nui he kaiārahi mōna. Ka tuku oro te pekapeka mā tōna ihu, mā tōna waha rānei, ā, ka pā atu ērā oro ki ngā taha o te ana, o te aha rānei, kātahi ka hawahawa, ka wawara ērā oro kia rangona mai ai e ōna taringa. Mā tēnei te pekapeka ka mōhio ki te tata, ki te tawhiti rānei o ngā taha o te ana i a ia e rere ana.

Kua raru katoa te oranga o te pekapeka, i te mea kei te ngahere tō rātou kāinga, ā, kei te ngaro haere tonu ngā ngahere o Aotearoa. Kua huri te nuinga hei whenua pāmu nā te tangata. Waihoki, ko ngā kararehe kua kōkūhuna pērā i te paihamu me te tia e kai ana, e whakamate ana i ngā rākau me ngā otaota o te ngahere.

He tamaiti a Tāne te pekapeka e noho ana i tēnei motu mai rā anō. Me tiaki e tātou kei ngaro mō ake tonu atu.

Ngā tohutoro

Department of Conservation. *New Zealand's Bat Fauna*. I tangohia i te 09/10/07 mai i www.mtbruce.org.nz/Battalk.pdf

Wikipedia, The Free Encyclopedia. *Bats*. I tangohia i te 09/10/07, mai i <http://en.wikipedia.org/wiki/Bat>

Ngā Āhuatanga Reo



Tirohia ngā āhuatanga reo
kua whakamahia e Huia.

Te kupu ingoa

pekapeka kararehe
wāhi tinana
parirau taringa
matihao ihu
waha

Te kupu āhua

tawhito rerekē
koi pirau
pōuri nui

Te kupumahi

rere hopu
rapu tīkaro
hongī tuku
pā hawahawa
wawara

Te kupu te hei tohu i te tini

te pekapeka
te tangata
te paihamu
te tia

Te reo-ā-kaupapa

ngote ū taketake
kōkuhu

Te Pekapeka

Ko te pekapeka te tū kararehe ngote ū taketake anake ka noho ki te mata o te whenua i Aotearoa. Ka kitea te tini o ngā momo pekapeka ki ngā tōpito katoa o te ao, engari kāore i te pērā te maha ki Aotearoa. I ngā wā o mua e toru ngā momo pekapeka i Aotearoa nei, engari kua mate haere noa tētahi momo. E ai ki ētahi, i ahu mai te pekapeka i ngā whitu tekau miriona tau ki muri.

Kei ngā wāhi tawhito rawa o te ngahere ngā kāinga noho o te pekapeka. Ka kai rātou i ngā momo ngāngara, ngā huarākau, te wai-hua, me te wai-putiputi. Kua tino rerekē ō rātou tinana i ngā tau kua hipa atu kia pai mō ngā tū āhuatanga o ō rātou kāinga noho. Hei tauira, he parirau ō rātou kia taea e rātou te rere i a rātou e hopu kai ana, ā, he matihao koi ō rātou mō te tīkaro ki ngā rākau pirau ki te rapu kai. Mā te ihu hoki rātou hongī kai ai.

Ka noho te pekapeka i roto i ngā wāhi pōuri, ka puta i te pō ki te kimi kai. Ko ōna taringa nui he kaiārahi mōna. Ka tuku oro te pekapeka mā tōna ihu, mā tōna waha rānei, ā, ka pā atu ērā oro ki ngā taha o te ana, o te aha rānei, kātahi ka hawahawa, ka wawara ērā oro kia rangona mai ai e ōna taringa. Mā tēnei te pekapeka ka mōhio ki te tata, ki te tawhiti rānei o ngā taha o te ana i a ia e rere ana.

Kua raru katoa te orange o te pekapeka, i te mea kei te ngahere tō rātou kāinga, ā, kei te ngaro haere tonu ngā ngahere o Aotearoa. Kua huri te nuinga hei whenua pāmu nā te tangata. Waihoki, ko ngā kararehe kua kōkuhuna pērā i te paihamu me te tia e kai ana, e whakamate ana i ngā rākau me ngā otaota o te ngahere.

He tamaiti a Tāne te pekapeka e noho ana i tēnei motu mai rā anō. Me tiaki e tātou kei ngaro mō ake tonu atu.

Ngā tohutoro

Department of Conservation. *New Zealand's Bat Fauna*. I tangohia i te 09/10/07 mai i www.mtbruce.org.nz/Battalk.pdf

Wikipedia, The Free Encyclopedia. *Bats*. I tangohia i te 09/10/07, mai i <http://en.wikipedia.org/wiki/Bat>

Tirohia te whārangi 36 mō te whakamāramatanga o ēnei āhuatanga reo.



Ngā Wāhanga

Tirohia ngā wāhanga e whā o te whakaahua whānui a Huia.
Kua tāpiritia hoki ngā tohutoro hei whakamōhio atu ki te
kaipānui nō hea te mātauranga.

Te tapanga

Te Pekapeka

Te whakamāramatanga

Ko te pekapeka te tū kararehe ngote ū taketake anake ka noho ki te mata o te whenua i Aotearoa. Ka kitea te tini o ngā momo pekapeka ki ngā tōpito katoa o te ao, engari kāore i te pērā te maha ki Aotearoa. I ngā wā o mua e toru ngā momo pekapeka i Aotearoa nei, engari kua mate haere noa tētahi momo. E ai ki ētahi, i ahu mai te pekapeka i ngā whitu tekau miriona tau ki muri.

Te whakaahuatanga

Kei ngā wāhi tawhito rawa o te ngahere ngā kāinga noho o te pekapeka. Ka kai rātou i ngā momo ngāngara, ngā huarākau, te wai-hua, me te wai-putiputi. Kua tino rerekē ō rātou tinana i ngā tau kua hipa atu kia pai mō ngā tū āhuetanga o ō rātou kāinga noho. Hei tauira, he parirau ō rātou kia taea e rātou te rere i a rātou e hopu kai ana, ā, he matihao koi ō rātou mō te tīkaro ki ngā rākau pirau ki te rapu kai. Mā te ihu hoki rātou hongī kai ai.

Ka noho te pekapeka i roto i ngā wāhi pōuri, ka puta i te pō ki te kimi kai. Ko ōna taringa nui he kaiārahi mōna. Ka tuku oro te pekapeka mā tōna ihu, mā tōna waha rānei, ā, ka pā atu ērā oro ki ngā taha o te ana, o te aha rānei, kātahi ka hawahawa, ka wawara ērā oro kia rangona mai ai e ōna taringa. Mā tēnei te pekapeka ka mōhio ki te tata, ki te tawhiti rānei o ngā taha o te ana i a ia e rere ana.

Kua raru katoa te oranga o te pekapeka, i te mea kei te ngahere tō rātou kāinga, ā, kei te ngaro haere tonu ngā ngahere o Aotearoa. Kua huri te nuinga hei whenua pāmu nā te tangata. Waihoki, ko ngā kararehe kua kōkūhuna pērā i te paihamu me te tia e kai ana, e whakamate ana i ngā rakau me ngā otaota o te ngahere.

Te whakakapinga

He tamaiti a Tāne te pekapeka e noho ana i tēnei motu mai rā anō. Me tiaki e tātou kei ngaro mō ake tonu atu.

Ngā tohutoro

Department of Conservation. *New Zealand's Bat Fauna*. I tangohia i te 09/10/07 mai i www.mtbruce.org.nz/Battalk.pdf

Wikipedia, The Free Encyclopedia. *Bats*. I tangohia i te 09/10/07, mai i <http://en.wikipedia.org/wiki/Bat>

Tirohia te whārangi 39 mō te whakamāramatanga o ēnei wāhanga.

He Mahere Ārahi i te Tuhituhi



Ngā Pātai Rangahau 1

Āku pātai rangahau	
Te whakamāramatanga	
Te āhua	
Te mahi	

Ngā Pātai Rangahau 2

Āku pātai rangahau	Ngā whakautu

Ngā Tauira Tuhinga



Tōku Pahikara Hou

He pahikara hou tōku. I homai e ōku mātua hei koha mō taku huritau. Ko te pahikara nei te tino whiwhinga mōku, i te mea mai rā anō taku hiahia ki te whiwhi pahikara.

He rawe te āhua o tōku pahikara hou. He whero me te mā ngā tae. E rua ngā wīra pango, e rua hoki ngā puringa maitai. E rua ngā pētara kirihou, kotahi te tūru hei nohoanga mōku. Ka pīataata i te rā me te mīharo hoki. E ai ki aku hoa ko tōku pahikara te tino pahikara.

Kei te ako tonu au ki te eke pahikara. Me tautoko mai tētahi i ahau ki te eke i tōku pahikara, i te mea he āhua teitei mōku. Mā tētahi ahau e pupuri i te tuatahi, i te mea me kaha aro ahau ki te pupuri ki ngā puringa, me te whakahuri i ngā pētara i te wā kotahi. Otirā, e mōhio ana ahau e kore e roa ka tere taku haere pēnei me te hau.

Ki ahau nei, he tino pai ngā pahikara, i te mea ka whakahākoakoa i ngā tamariki, ā, ka hari i a koe ki wī, ki wā.

He Tino Nui Tōku Aroha mō Taku Kurī

He kurī iti tāku, ko Kurī tōna ingoa. He nui tōku aroha mōna, ā, ko ia taku tino hoa. He 'fox terrier' te momo o taku kurī. He pango, he mā hoki ana tae. He kaha tōna hiahia ki te pekepeke me te korikori.

He pakupaku noa iho a Kurī. He iti ana waewae, he poto ana huruhuru. He poto, he koi hoki ana taringa. He karu parauri ōna e whakaatu ana i tōna hīanga. Me tōna kaha ki te omaoma haere! He reka ki a ia te kai mīti me ngā pihikete kurī, heoi ko te kai pai rawa ki a ia ko tērā ka whakamomokatia e au māna.

I tō mātou whiwhinga i a ia he kaha kē ia ki te whai atu i tō mātou motokā. Ka nui taku māharahara ka tukia ia e te motokā, nō reira nāku ia i whakaako kia kaua e whai atu. Kāore i te pai ki a ia te mātakitaki i a mātou e haere atu ana i te huarahi, engari kua mārama ia i nāianei he haerenga poto noa iho tō mātou. Ka noho ia, ka tatari ki tō mātou hokinga mai.

He koi te hinengaro o Kurī ki tāku e tono atu. Ka taea e ia te niupepa te tiki, te noho ki raro, me te tū ki ngā waewae e rua. Kaingākau ana au ki a ia me tōna kaha ki te whakarongo. He kaiwhakaara pai hoki ia, i te mea he tino kaha ia ki te auau mehemea ka tae atu he tauhou ki tō mātou kāinga.

He nui taku whakapae ko te kurī te hoa pūmau mō te kōtiro, i te mea ko taku kurī e piri tahi ana ki a au i ngā wā katoa, me tōna whiore whiuwhiu, me tōna harikoa hoki.

He Tino Tangata Tōku Koroua

He tino tangata tōku koroua, he kaumātua matatau hoki. E whitu tekau mā rima tau te pakeke o tōku koro i tōna matenga. I a ia e ora ana he tino tawhiti ō māua kāinga, nā reira i whai wāhi noa iho māua ki te kite atu i a māua anō i ngā wā whakatā. He pātata tōna kāinga ki te ngahere, te wāhi pūmau mōna. E ai ki tāna, ki te kore te ngahere, ka kore hoki ko tātou. I reira tana kāinga mō te katoa o tana oranga. E ai ki ētahi tāngata, he pai kē ki a Koro te noho me tōna kotahi. I pērā hoki i muri i te matenga atu o tōku kuia.

Ki tōku nei mahara he kūwhewhewhewhe tōna kiri, he hiriwa ōna makawe. He roa, he mātotoru ōna tukemata, ā, i tautau ki runga i ōna karu. Na tērā, i ētahi wā ka whakaaro au mō tōna āheinga ki te kite atu i raro i ōna tukemata. Nā te mea he teitei ake ia i ahau, i whakapae ahau ko ia tētahi tangata tāroaroa.

He koroua ngākau māhaki ia, me tōna harikoa i tōna kitenga atu i a mātou. He kaha nōna ki te menemene. Me tōna hiahia ki te whakaatu mai i āna momo mahi. He kaiako pai a Koro, ā, he maha aku akoranga ki ngā mea katoa, ki ngā mea o te ngahere hoki i a māua e noho tahi ana. He mōhio nōna ki ngā ingoa mō ngā rākau me ō rātou painga. Ka akiaki a Koro i ahau i ngā wā katoa me te kī, “Whakarongo mai, e Moko, he oranga kei roto i ēnei mahi.”

E mōhiohia ana a Koro e te tini tangata e noho ana ki te riu, ā, ki te māuiui tētahi ka haere atu ia me ana rongoā. Ka maharatia a Koro mō tōna ngākau māhaki me tōna kaha pupuri ki ngā tikanga a te Māori.

Heoi anō, ka maumahara ahau i ō māua hīkoitanga i te ngahere ki te kohikohi rongoā me ōna ringa kaha nei e pupuri ana i ōku, e ārahi ana i a māua.

Te Manu Aute

Ko te manu aute, te manu tukutuku rānei, he taonga rere i hangaia e te Māori i ngā rau tau ki muri. E ai ki te kōrero he hononga te manu aute i waenganui i te tangata me te ao wairua.

I aua rā he karere ngā manu aute nunui ka tohu i ngā toimahatanga kei te heke. Ka tukuna hoki e ngā manu aute he karere ki ngā atua mai i te tangata. Heoi, ko ngā mea iti i hangaia hei taonga korikori mā te tamariki.

I hangaia ētahi o ngā manu aute kia pērā te rite ki te manu, me te tangata hoki. He pērā hoki te rahi ki aua mea. He parirau māmā ōna. Ko te anga he peka rākau, ā, he whiore roa ki ētahi, he whiore poto ki ētahi atu.

He maha ngā taputapu kua whakamahia. Kua hangaia ētahi me te maro aute, arā, te maro kua hangaia i te kiri o te rākau aute. I whakarākeingia ētahi ki te huruhuru kurī, ngā raukura manu, me ngā anga moana hoki.

I ēnei rā, ka hanga, ka whakarere hoki te tangata i te manu aute hei taonga korikori mā te tamariki, hei whakangahau hoki i a rātou.

Ngā tohutoro

Art New Zealand. *Ancient Māori Kites*. I tangohia i te 11/10/07 mai i

<http://www.art-newzealand.com/Issues1to40/kites.htm>

New Zealand in History. *Traditional Māori sport and games: Māori kite flying*.

I tangohia i te 11/10/07 mai i <http://history-nz.org/kite.html>

Te Pahikara

Ko te pahikara he tū mīhini ka whakamahia e te tangata kia haere ki wī, ki wā. I whakatenehia te pahikara i ngā rua rau tau ki muri ki Uropi. E ai ki tā ētahi, neke atu i te kotahi piriona pahikara e whakamahia ana e tātou huri noa i te ao.

Ko ngā pahikara e mōhiotia whānuitia ana ko ērā kua hangaia me ngā wīra, ngā puringa, me ngā pētara e rua, me tētahi nohoanga. Kua rerekē anō te hanga o te pahikara i ngā tau kua hipa atu. Hei tauira, ko ētahi kua whakahoahoatia mō ngā tāngata tokorua, ā, ko ētahi atu kotahi noa iho te wīra.

Mā te kaha o te tangata te pahikara e whakahaere. Me noho te tangata ki te nohoanga me te pupuri hoki i ngā puringa i te wā kotahi. Ka pana i ngā pētara, ā, ka huri haere ngā wīra. Mā tēnei ka neke whakamua te pahikara.

I ngā tau kua hipa atu ko te pahikara te tino mīhini kawē tangata i ētahi whenua o tēnei ao, ā, kei te pērā tonu i ēnei rā, ahakoa te nui haere o ngā motokā. Otirā, he maha ngā momo pahikara mō ngā mahi i tua atu i te kawē tangata noa iho. Ko ētahi mō ngā momo whakataetae ki ngā rori, ki ngā huarahi kei ngā maunga hoki. Ko ētahi atu mō te ngahau hoki.

Ka tū tonu te painga a te tangata ki te eke pahikara i ngā tau kei te heke, ahakoa kāore i te pērā te tere o te pahikara ki te motokā.

Ngā tohutoro

Wikipedia, The Free Encyclopedia. *Bicycles*. I tangohia i te 09/10/07, mai i

<http://en.wikipedia.org/wiki/Bikes>

Te Pekapeka

Ko te pekapeka te tū kararehe ngote ū taketake anake ka noho ki te mata o te whenua i Aotearoa. Ka kitea te tini o ngā momo pekapeka ki ngā tōpito katoa o te ao, engari kāore i te pērā te maha ki Aotearoa. I ngā wā o mua e toru ngā momo pekapeka i Aotearoa nei, engari kua mate haere noa tētahi momo. E ai ki ētahi, i ahū mai te pekapeka i ngā whitu tekau miriona tau ki muri.

Kei ngā wāhi tawhito rawa o te ngahere ngā kāinga noho o te pekapeka. Ka kai rātou i ngā momo ngāngara, ngā huarākau, te wai-hua, me te wai-putiputi. Kua tino rerekē ō rātou tinana i ngā tau kua hipa atu kia pai mō ngā tū āhuatanga o ō rātou kāinga noho. Hei tauira, he parirau ō rātou kia taea e rātou te rere i a rātou e hopu kai ana, ā, he matihao koi ō rātou mō te tīkaro ki ngā rākau pirau ki te rapu kai. Mā te ihu hoki rātou hongī kai ai.

Ka noho te pekapeka i roto i ngā wāhi pōuri, ka puta i te pō ki te kimi kai. Ko ōna taringa nui he kaiārahi mōna. Ka tuku oro te pekapeka mā tōna ihu, mā tōna waha rānei, ā, ka pā atu ērā oro ki ngā taha o te ana, o te aha rānei, kātahi ka hawahawa, ka wawara ērā oro kia rangona mai ai e ōna taringa. Mā tēnei te pekapeka ka mōhio ki te tata, ki te tawhiti rānei o ngā taha o te ana i a ia e rere ana.

Kua raru katoa te oranga o te pekapeka, i te mea kei te ngahere tō rātou kāinga, ā, kei te ngaro haere tonu ngā ngahere o Aotearoa. Kua huri te nuinga hei whenua pāmu nā te tangata. Waihoki, ko ngā kararehe kua kōkūhuna pērā i te paihamu me te tia e kai ana, e whakamate ana i ngā rākau me ngā otaota o te ngahere.

He tamaiti a Tāne te pekapeka e noho ana i tēnei motu mai rā anō. Me tiaki e tātou kei ngaro mō ake tonu atu.

Ngā tohutoro

Department of Conservation. *New Zealand's Bat Fauna*. I tangohia i te 09/10/07 mai i www.mtbruce.org.nz/Battalk.pdf

Wikipedia, The Free Encyclopedia. *Bats*. I tangohia i te 09/10/07, mai i <http://en.wikipedia.org/wiki/Bat>

Te Kuputaka

aute	He momo rākau.
hawahawa	Ki te hawahawa tētahi mea, ka wiriwiri, ka nekeneke katoa taua mea.
kaiwhakaara	Ki te whakaara koe i tētahi, ka whakaoho koe i a ia.
kōkuhu (na)	Ko te kararehe kua kōkuhuna he kararehe i haria mai e te tangata ki Aotearoa mai i whenua kē.
kōwae	He wāhanga o te tuhinga, kotahi anake te whakaaro matua o roto.*
kupu whakarite	Mā ngā kupu whakarite ka whakaritea ngā kaupapa e rua.
kūwhewhewhewhe	Ki te kūwhewhewhewhe te kiri o tētahi, he kaumātua ia, ā, he rite te āhua o tōna kiri ki tō te arewhana.
maitai	He momo konganuku pērā i te rino.
maro aute	He maro kua hangaia me te kiri o te rākau aute.
ngote ū	Ko te hunga kararehe ngote ū ngā kararehe ka whānau ora mai. Ka ngote ngā punua i te waiū o te whaea.
pae tukutuku	He tuhinga kei te ipurangi.
pētara	Ka pana te kaieke pahikara i ngā pētara ki ōna waewae hei whakahaere i te pahikara.
puringa	Ko te pou me ngā kakau kei mua o te pahikara hei rūnā i te pahikara.
taketake	Ko te kararehe taketake he kararehe nō tōna whenua mai rā anō, kāore i haria mai nō tāwāhi e te tangata.
tīkaro	Ki te tīkaro koe i tētahi mea, ka rapirapi, ka tango mai koe i tētahi mea kei roto.
tuhinga tipoka	Ko ngā tuhinga poto hei whakawhāiti i ngā whakaaro, i ngā mātauranga rānei.
wawara	Ki te wawara tētahi oro, ka rangona taua oro mō te wā roa.
whakamomoka (tia)	Ki te whakamomoka koe i tētahi mea, ka tango atu, ka hunia taua mea kia kore tētahi e kite i a koe e tango atu ana.
whakatene (hia)	Ki te whakatene koe i tētahi mea, ka hangaia tuatahi taua mea.

*Te Tāhuhu o te Mātauranga. (2006). *Tirohia Kimihia: He Kete Wherawhera*. Te Whanganui-a-Tara: Huia Te Manu Tuku Kōrero.

Ngā Tohutoro

Art New Zealand. *Ancient Māori Kites*. I tangohia i te 11/10/07 mai i <http://www.art-newzealand.com/Issues1to40/kites.htm>

Biggs, B. (1990). *Me ako taatou i te reo Maaori: He Whakamaaramatanga moo ngaa mahi ako i te Reo Maaori*. He mahi whakamāori nā Cleve Barlow. Auckland: Billy King Holdings.

Department of Conservation. *New Zealand's Bat Fauna*. I tangohia i te 09/10/07 mai i www.mtbruce.org.nz/Battalk.pdf

Derewianka, B. (1991). *Exploring How Texts Work*. Rozelle, N.S.W.: Primary English Teaching Association.

Education Department of Western Australia. (1997). *Writing Resource Book: First Steps*. Melbourne: Rigby Heinemann.

Harlow, R. (2004). *A Māori Reference Grammar*. Auckland: Pearson Education.

Joseph, D. (2004). *Te kohinga pukapuka - Te Kōrari*. Wellington: H.A.N.A Limited.

Joseph, D. (2006, June). *He Momo Kōrero Māori, He Momo Tuhinga, He Nuka Reo: Māori Text Types, Genre and Literary Devices*. Report for the Ministry of Education Māori Language Education Team. Palmerston North: Te Pūtahi-a-Toi.

Māori Language Commission Te Taura Whiri i te Reo Māori. (1996). *Te Matatiki: Contemporary Māori Words*. Auckland: Oxford University Press.

Māori Language Commission Te Taura Whiri i te Reo Māori. *Orthographic Conventions*. I tangohia i te 29/11/05, mai i http://www.tetaurawhiri.govt.nz/_english/pub_e/conventions2.shtml.

New Zealand in History. *Traditional Māori sport and games: Māori kite flying*. I tangohia i te 11/10/07, mai i <http://history-nz.org/kite.html>

Ngata, H. M. (1993). *English-Māori Dictionary*. Te Whanganui-a-Tara: Te Pou Taki Kōrero.

Ryan, P. M. (2001). *The Reed Dictionary of Modern Māori*. Second edition. New Zealand: Reed Publishing.

Te Tāhuhu o te Mātauranga. (1996). *Te Reo Māori i roto i te Marautanga o Aotearoa*. Te Whanganui-a-Tara: Te Pou Taki Kōrero.

Te Tāhuhu o te Mātauranga. (2006). *Tirohia Kimihia: He Kete Wherawhera*. Te Whanganui-a-Tara: Huia Te Manu Tuku Kōrero.

Wikipedia, The Free Encyclopedia. *Bats*. I tangohia i te 09/10/07, mai i <http://en.wikipedia.org/wiki/Bat>

Wikipedia, The Free Encyclopedia. *Bicycles*. I tangohia i te 09/10/07, mai i <http://en.wikipedia.org/wiki/Bikes>

Williams, H. W. (1975). *A Dictionary of the Māori Language*. Seventh edition. Wellington: Government Printer.



Te Matapaki

Mā te matapaki, ka whanake
ngā pūkenga tuhituhi.

Ngā Mātāpono me ngā Pūtake Whānui mō te Matapaki

E whā ngā mātāpono hei ārahi i te kaituhi me ngā tāngata āwhina ki te matapaki i āna tuhinga:

- Whakarongo ki te kaituhi.
- Ākina, tautokohia te kaituhi.
- Arahina te kaituhi ki te ara e tika ana mōna.
- E tika ana kia whai wāhi ngā tāngata āwhina ki te āwhina i te kaituhi, kaua te tuhinga.

E whā ngā pūtake whānui o te matapaki:

- Hei akiaki i te kaituhi kia whakaaturia ōna mōhiotanga kē, hei whai māramatanga hoki mō ngā mahi kei mua i a ia.
- Kia rangona e te kaituhi ngā whakawhitinga kōrero a tangata kē, kia mōhio ai ia i ngā mea kāore anō kia mau i a rātou.
- Hei āwhina i te kaituhi kia mārāma ia ki ngā āhuatanga tuhituhi kua tutuki i a ia i tāna tuhinga.
- Kia whakamōhio atu te kaituhi i ōna mōhiotanga ki te kaiako, mā tēnā te kaiako ka āwhina i a ia kia mau ngā momo rautaki tuhituhi e tika ana.

I te tuatahi, whakatauria te aronga, te huarahi me te momo matapaki.

Ngā Huarahi Matapaki

Ko ēnei ētahi o ngā huarahi pai mō te matapaki i te tuhinga:

- Takitahi
- Takirua me tētahi hoa
- Takirua me te kaiako
- Takitini

Ngā Momo Matapaki

He whakamārama i ngā pūtake o ngā momo matapaki

Matapaki mō te Kaupapa

E hāngai ana tēnei matapaki ki ngā mātauranga e hiahia ana te kaituhi kia mau i te kaupānui. Hei tauira, i te tuhinga takenga pūtaiao ka tuhi pea te kaituhi mō te take i pērā ai tētahi tū āhuatanga.

Ngā Pātai Ārahi

Ētahi pātai hei ārahi i ngā momo matapaki

- He aha te pūtake o te tuhinga?
- Mā wai te tuhinga?
- He aha tētahi tapanga mō te tuhinga?
- He aha ōu whakaaro matua mō te tuhinga?
- He aha ngā whakaaro ka tautoko i ōu whakaaro matua?
- Whakamāramatia mai ōu whakaaro.
- He mōhiotanga anō me rapu?
- He pātai atu anō āu mō te tuhinga?

Matapaki mō te Momo Tuhinga

E hāngai ana tēnei matapaki ki te momo tuhinga e tika ana mō ngā mātauranga ka whakaaturia. Hei tauira, i te tuhinga taki whaiaro ka ahu mai te hiahia i te kaituhi ki te tuhi mō tētahi wheako whaiaro ōna, ā, ka raupapahia tērā wheako i te taki.

- He aha te momo tuhinga e tika ana?
- He aha te tino take o tāu tuhinga e hiahia ana koe kia mau i te kaipānui?
- Kua whakaritea ngā whakaaro matua me ngā whakaaro tautoko?
- He tika rānei te raupapatanga o ngā mahi?
- Kua whai whakaaro ki ngā mātauranga katoa e tika ana mō te tuhinga?
- Ka aha i nāianei?

Matapaki mō ngā Momo Rautaki Tuhituhi

E hāngai ana tēnei matapaki ki ngā rautaki tuhituhi kua whakamahia e te kaituhi i a ia e tuhituhi ana, ā, nā te aha hoki i pērā ai. Ko te pūtake o tēnei matapaki ko te āwhina i te kaituhi ki te tāutu i ngā rautaki kua whakamahia kē e ia, ki te whakawhanake hoki i tāna āheinga ki te whakamahi i ētahi atu rautaki tuhituhi.

- He aha ngā rautaki tuhituhi i whakamahia e koe ki te timata i tāu tuhinga?
- He aha ētahi raruraru i puta i a koe e tuhi ana? I ahatia ērā raruraru e koe kia oti pai ai te mahi tuhituhi? He aha māku hei āwhina i a koe?
- I pēhea tāu kōwhiringa pūtake mō tāu tuhinga?
- I muri mai i te kōwhiringa pūtake i ngāwari noa iho te kimi whakaaro hei tautoko i taua pūtake?
- Kua rerekē pēhea nei āu rautaki tuhituhi?
- Kua kite au i ētahi kupu/rerenga kua whakarerekētia e koe. I pēhea tāu whakatau kia pērā ai te whakarerekē?

Matapaki mō te Arotake Tuhinga

He matapaki tēnei hei āwhina i te kaituhi ki te pānui i āna ake tuhinga mai i te tirohanga o te hunga pānui. Ka tuku pātai te kaituhi ki a ia anō mō te mārāmatanga, te painga me te tutukitanga o ana tuhinga ki te kaipānui.

- He aha ōu whakaaro mō te tuhinga?
- He kupu pai ake i ērā kua whakamahia? He kupu pai ake kia mau ai i te kaipānui te pānga/iho o te tuhinga?
- Kua tuhia katoatia ngā mātauranga e hiahia ana koe kia mau i te kaipānui?
- E tika ana te reo kua whakamahia i te tuhinga kia pai ai te kawenga o ngā whakaaro?
- He pai te raupapatanga o ōu whakaaro?
- Me whai āwhina te kaipānui kia mārāma pai ai ia ki āu tuhinga?

Matapaki mō te Whakatika Tuhinga

E hāngai ana tēnei matapaki ki ngā āhuatanga kua whakatikaina kē e te kaituhi, ki te whakatika hoki i ngā tikanga tuhituhi pēnei me te tātaki kupu, te kārawarawatanga me te takotoranga o ngā kupu.

- E tika ana te ia o te tuhinga?
- E tika ana te noho o ngā tohutō?
- He tika te whakatakotoranga o ngā rerenga tuhituhi?
- Kua tuhia e koe ngā kārawarawatanga i ngā wā, i ngā wāhi hoki e tika ana?
- Ko tēnei te tino kōunga o āu mahi tuhituhi?
- Kua tutuki i a koe tētahi o āu whāinga ako? Ka aro tāua ki ēhea o ngā whāinga ako i nāianei?

Matapaki mō te Whakaputa Tuhinga

E hāngai ana tēnei matapaki ki ngā momo whakatau e tika ana mō te whakaputa, arā, te tā tuhinga. Hei tauira, mā tēnei matapaki ka whakatauria mehemea ka tuhituhi mā te ringa, mā te rorohiko rānei me te whiriwhiri i ngā pikitia e tika ana mō te tuhinga.

- He aha te momo hanga o te tuhinga kua tā – he mahere, he pukapuka, he aha rānei?
- He aha tētahi ara kia tutuki pai ai te tā i te tuhinga?
- Ka tuhituhi koe mā te ringa, mā te rorohiko rānei?
- Mā wai e tā – māu, mā te kaiako, mā tētahi kaiāwhina rānei?
- He aha ētahi pikitia e pai ana?
- Ka meatia he pikitia kua tuhia ā-ringa, ā-rorohiko, he whakaahua rānei?

Te Tukanga Tuhituhi

Me toro te kaituhi ki mua, ki muri ki ngā wāhanga katoa kia pai ai te takoto o te tuhinga.

Te Whakarite Te whakatau, te whakarite whakaaro

- Tāutuhia te pūtake me ngā kaipānui
- Whakatauria te momo tuhinga
- Whiriwhiria tētahi tapanga kia hāngai pū ōu whakaaro ki te kaupapa
- Kohia ōu whakaaro
- Rapuhia te mātauranga
- Whakaritea ngā whakaaro matua me ngā whakaaro tautoko mō ngā wāhanga o te tuhinga

Te Whakatakoto Te waihanga tuhinga tuatahi

- Raupapahia ōu whakaaro me ngā mātauranga
- Waihangatia tāu tuhinga kia kitea te hononga o ngā whakaaro matua me ngā whakaaro tautoko
- I a koe e tuhi ana, me whakaaro hoki ki ētahi pātai e pā ana ki te pūtake o te tuhinga me ōna pānga

Te Whakamārama Te arotake, te whakamārama ake

- Pānuihia, ā, arotakengia ōu whakaaro me ngā mātauranga
- Toro atu ki tētahi/ētahi atu kia whai whakaaro arotake mai ki āu tuhinga, ā, whakamanahia ngā kōrero āwhina a te kaiarotake
- Pānuihia anō āu tuhinga kia arotakengia te pānga o te tuhinga ki te kaipānui
- Arotakengia ō tuhinga mā ēnei ara:
 - tīnīhia te raupapatanga o ngā whakaaro, o ngā kupu rānei
 - tīnīhia ngā kupu, ngā rerenga tuhituhi rānei kia pai ake te takoto o te tuhinga
 - tāpiritia atu he mātauranga anō

Te Whakatika Te whakatikatika i te reo

- Pānuihia anō tāu tuhinga
- Whakatikaina te reo o tāu tuhinga – te tātaki tika o ngā kupu, ngā tohutō, te wetewete reo me ngā kārawarawatanga

Te Whakaputa Te tā tuhinga

- Tāngia tāu tuhinga kia ngāwari noa iho te pānui, kia ātaahua hoki te takoto mā te kaipānui

Tuku atu, tuku mai Te tuku atu hei pānuitanga

- Tukuna tāu tuhinga kia pānuihia e tētahi/ētahi atu